



## General information

### Load in

Load-in takes place at the rear of the venue, entrance via Fransensingel 65, 6211 AB Maastricht (NL). Parking space is limited, so please let us know in advance by which means of transport you will be arriving.

### Local crew

1x FOH engineer, 1x monitor engineer and 1x light engineer.

### Backstage

Please notify us at least one week in advance if you have any dietary requirements (vegetarian, vegan, or fish only). The venue has 2 showers.

### Barriers

The venue has no fixed barriers.

### Merchandise

There is a merchandise booth available, free of charge. Please arrange your own seller and cardmachine. Muziekgieterij is a cashless venue. Signing after the show? Great! Please let us know in advance.

### House-photographer

Our house-photographer would like to make a picture backstage before the show. Please let us know if not allowed.

### Payments

We don't do any cash payments. All payments will be done via bank transfers. NO payment will be made without receiving a copy of a passport from ALL artists.

### Smoking

Please note that by the 1st of July 2008 it is no longer permitted to smoke in clubs/pubs/restaurants and venues in the Netherlands. The law includes stage, backstage and dressing rooms. We kindly ask for your cooperation. Please use our backstage smoking area for smoking.

### Prohibited

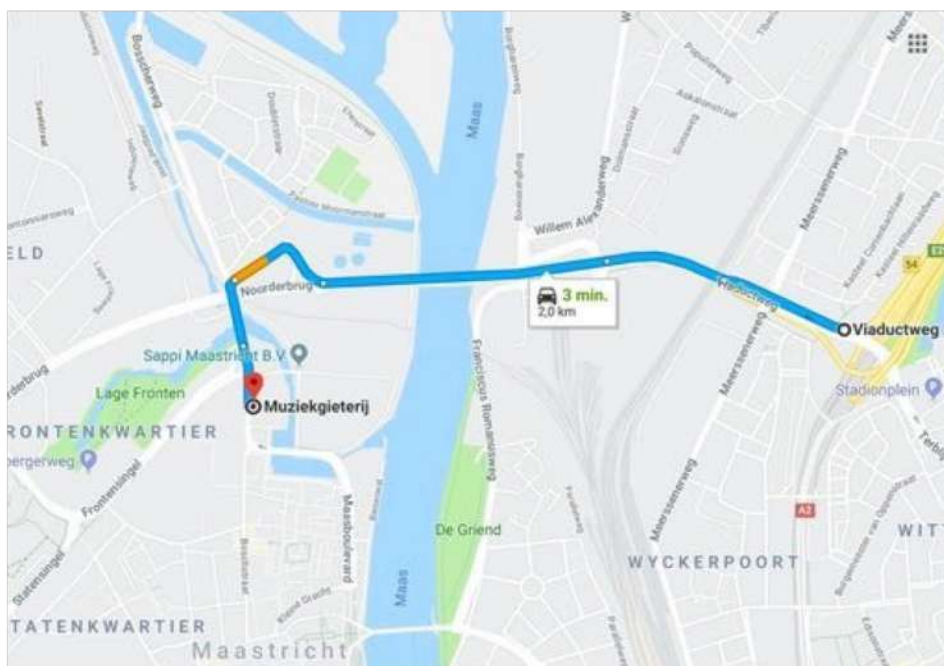
Graffiti, use of (fake)blood, pyrotechnics, confetti, streamers, snow bubble blowers of similar products that may harm our light and/or sound system is prohibited. You will be charged €200 excl. VAT for cleaning and all damage caused by band- or crew members will be charged.

### Insurance

All damage caused by band- or crew members on property of the venue (such as microphones, mixing consoles, dressing rooms, monitors etc.) will be charged to the band/crew on the day of the performance.

### Route

Backstage entrance /parking  
Fransensingel 65  
6211 AB Maastricht



## Audio

### PA

Adamson Spektrix arrays	14x
Subs	6x

### Amping & processing

Labgruppen FP10.000q	5x
LM26	2x

### FoH console

Soundcraft Vi3000

### Main PA input

Analogue at FoH or  
stageright (L/R + Sub)

### Distance stage to FoH

8m

### Wedges

Adamson M12 wedge	10x
Adamson IS119 sub	1x

### Amping & processing

Labgruppen D80	3x
----------------	----

### Monitor console

Soundcraft Vi1

### Patchbay FoH to stageright

Optical fibre	1x
Cat6	6x
SDI	6x
XLR in or out	16x

*Cable length is +/-  
30m/98.4ft*

*5m patch cables available*

**The venue has a sound pressure limit of 103 dB(A) LEQ 15 measured at the FoH position.  
We expect bands and their crews to respect this limit!**

### Microphones/Di's

Shure Beta 52	1x
Shure Beta 91	1x
Shure SM57	8x
Shure SM58	7x
Shure Beta 57a	1x
Shure Beta 56	2x
AT2020	2x
AT ATM350	2x

AKG D112	2x
AKG C430	2x
AKG C214	3x
AKG C1000	2x
Sennheiser E906	3x
Sennheiser E904	4x
Sennheiser MD421	2x
BSS Di Ar133	10x

### Microphone stands

K&M Tall boom	12x
K&M Short boom	13x

## Lights

### Stage

Robe AT575	8x
Showtec M800	9x
Eurolite stageblinder	2x

### Hall

Showtec M800	12x
Showtec Powerspot (merch)	2x

### Front

Halogen 1KW	6x
-------------	----

### Floor

Showtec Spectral CYC1500	7x
Showtec Tracker Q4	8x

### Hazer

Look Unique 2.1	1x
-----------------	----

### House console

High End Roadhog	1x
------------------	----

## Stage

### Stage dimensions

Height	0,9m/2.9ft
Width	8m/26.2ft
Depth	5m/16.4ft
Clearance	3,5m/11.4ft

### Performance Area

Scene opening	5m/16.4ft
Depth	5m/16.4ft

### Backdrop

Length	4m/13.1ft
Width	5m/16.4ft
Max. weight	50kg/110lbs

## Additional power

### Stage

230v shuko 16a (backline)	10x
32a CEE (stageleft)	1x

### FoH

230v shuko 16a	3x
32a CEE	1x

# Small Club



Count	Description	Mode	Node specs	
8X	Robe Colorspot 575 AT	Mode 3	Protocol:	Artnet
22X	Showtec M800 tour	ar1.s	Adres node:	2.0.0.1.
8X	Showtec Tracker	15 CH	Adres Road Hog 4:	2.0.0.2.
7X	Showtec Spectral cyc2000	arc 2		
6X	Front 1KW Fresnel	1 CH		
2x	Blinder	1 CH		
1X	Look Uniue 2.1	2 CH		
1X	Road Hog 4			

## Exrta info

We have 1 node to control the lights in the small club, in total we have 8 universes, 3 universes are used for the lights of the house.

The node is controlled via Artnet starting from 0/0 to 0/7.

You can connect to the network from the FOH and the stage, this is a closed network.

If you have any questions, please send us an email.

**Muziekgieterij Maastricht**

Small club Lighting Patch

V1.1 28-02-2023

Node 1: 2.0.0.1.

Roag Hog 4: 2.0.0.2.



Fixture ID	Description	Location	Mode	Adres	Note
101	Robe Colorspot 575 AT	LX 2	Mode 3	1.1	LX 1
102	Robe Colorspot 575 AT	LX 2	Mode 3	1.30	LX 1
103	Robe Colorspot 575 AT	LX 2	Mode 3	1.59	LX 1
104	Robe Colorspot 575 AT	LX 2	Mode 3	1.88	LX 1
105	Robe Colorspot 575 AT	LX 2	Mode 3	1.117	LX 2
106	Robe Colorspot 575 AT	LX 2	Mode 3	1.146	LX 2
107	Robe Colorspot 575 AT	LX 2	Mode 3	1.175	LX 2
108	Robe Colorspot 575 AT	LX 2	Mode 3	1.204	LX 2
201	Showtec M800 tour	LX 2	ar1.s	1.233	LX 1
202	Showtec M800 tour	LX 2	ar1.s	1.238	LX 1
203	Showtec M800 tour	LX 2	ar1.s	1.243	LX 1
204	Showtec M800 tour	LX 2	ar1.s	1.248	LX 1
205	Showtec M800 tour	LX 2	ar1.s	1.253	LX 1
206	Showtec M800 tour	LX 3	ar1.s	1.258	LX 2
207	Showtec M800 tour	LX 3	ar1.s	1.263	LX 2
208	Showtec M800 tour	LX 3	ar1.s	1.268	LX 2
209	Showtec M800 tour	LX 3	ar1.s	1.273	LX 2
210	Showtec M800 tour	LX Carre	ar1.s	2.20	LX CARRE
211	Showtec M800 tour	LX Carre	ar1.s	2.25	LX CARRE
212	Showtec M800 tour	LX Carre	ar1.s	2.30	LX CARRE
213	Showtec M800 tour	LX Carre	ar1.s	2.35	LX CARRE
214	Showtec M800 tour	LX Carre	ar1.s	2.40	LX CARRE
215	Showtec M800 tour	LX Carre	ar1.s	2.45	LX CARRE
216	Showtec M800 tour	LX Carre	ar1.s	2.50	LX CARRE
217	Showtec M800 tour	LX Carre	ar1.s	2.55	LX CARRE
218	Showtec M800 tour	LX Carre	ar1.s	2.60	LX CARRE
219	Showtec M800 tour	LX Carre	ar1.s	2.65	LX CARRE
220	Showtec M800 tour	LX Carre	ar1.s	2.70	LX CARRE
221	Showtec M800 tour	LX Carre	ar1.s	2.75	LX CARRE
222	Showtec M800 tour	LX Carre	ar1.s	2.80	LX CARRE
223	Showtec M800 tour	LX Carre	ar1.s	2.85	LX CARRE

**Muziekgieterij Maastricht**

Small club Lighting Patch

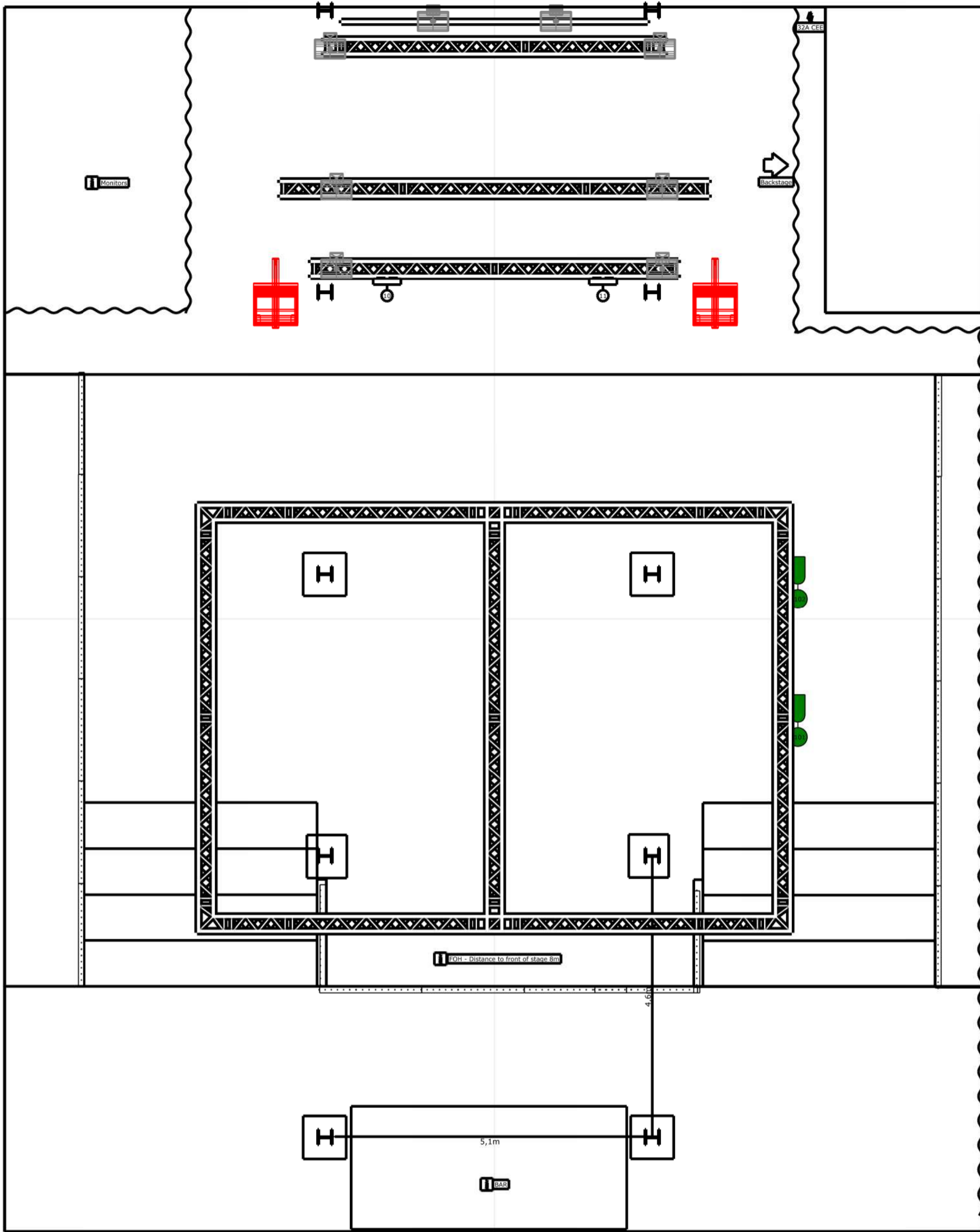
V1.1 28-02-2023

Node 1: 2.0.0.1.

Roag Hog 4: 2.0.0.2.

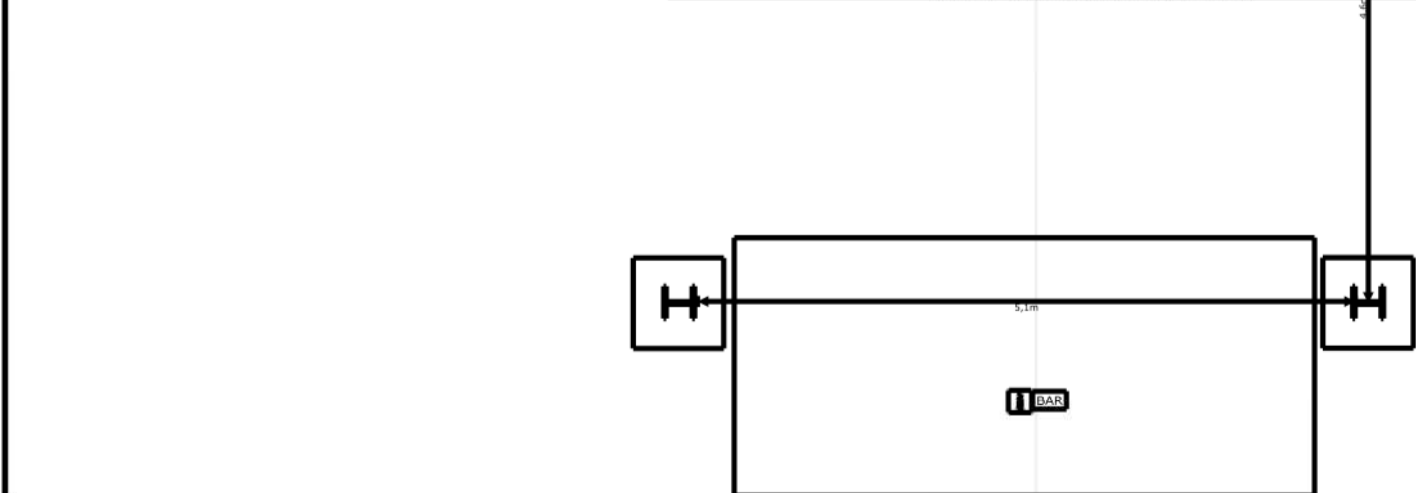
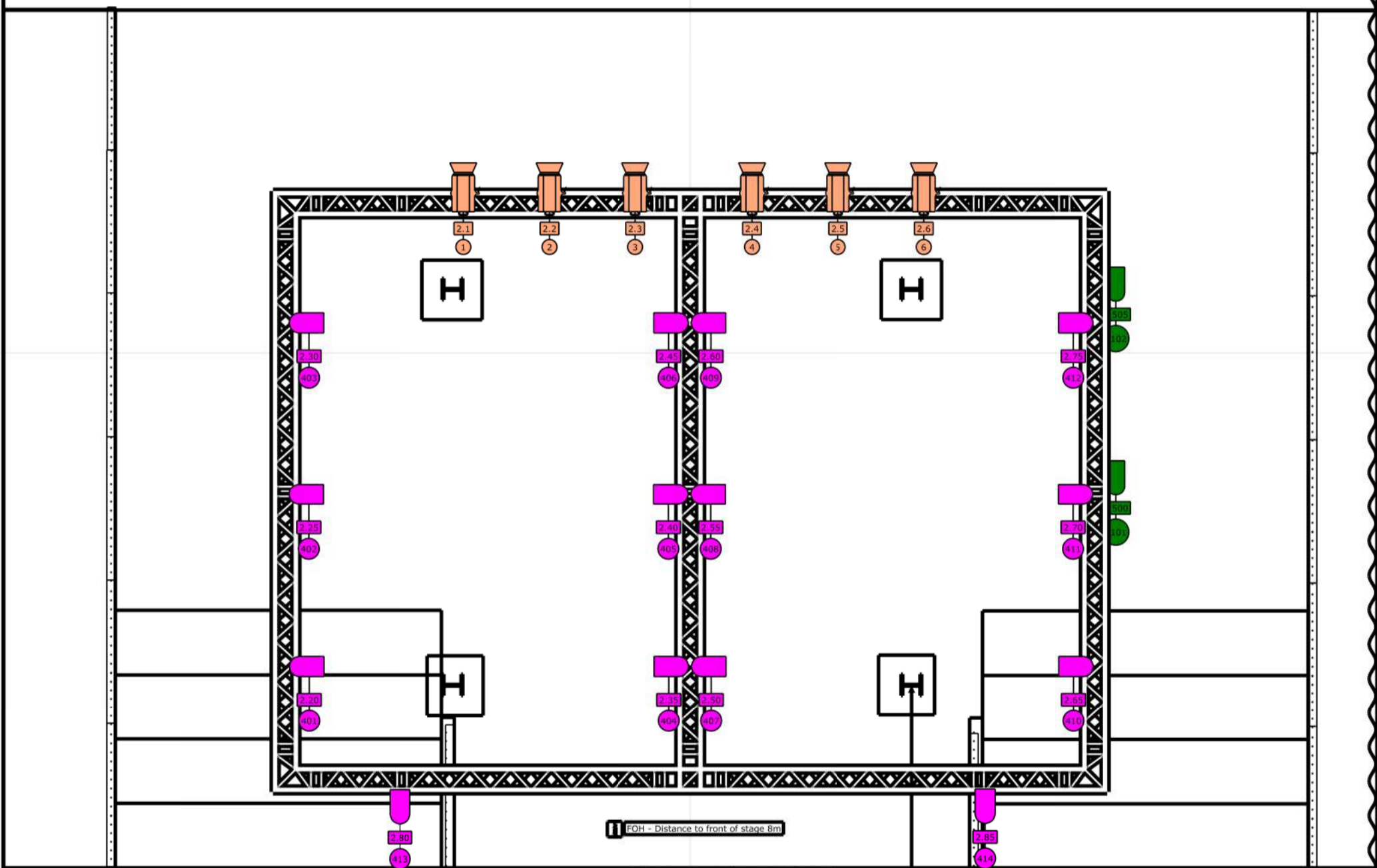
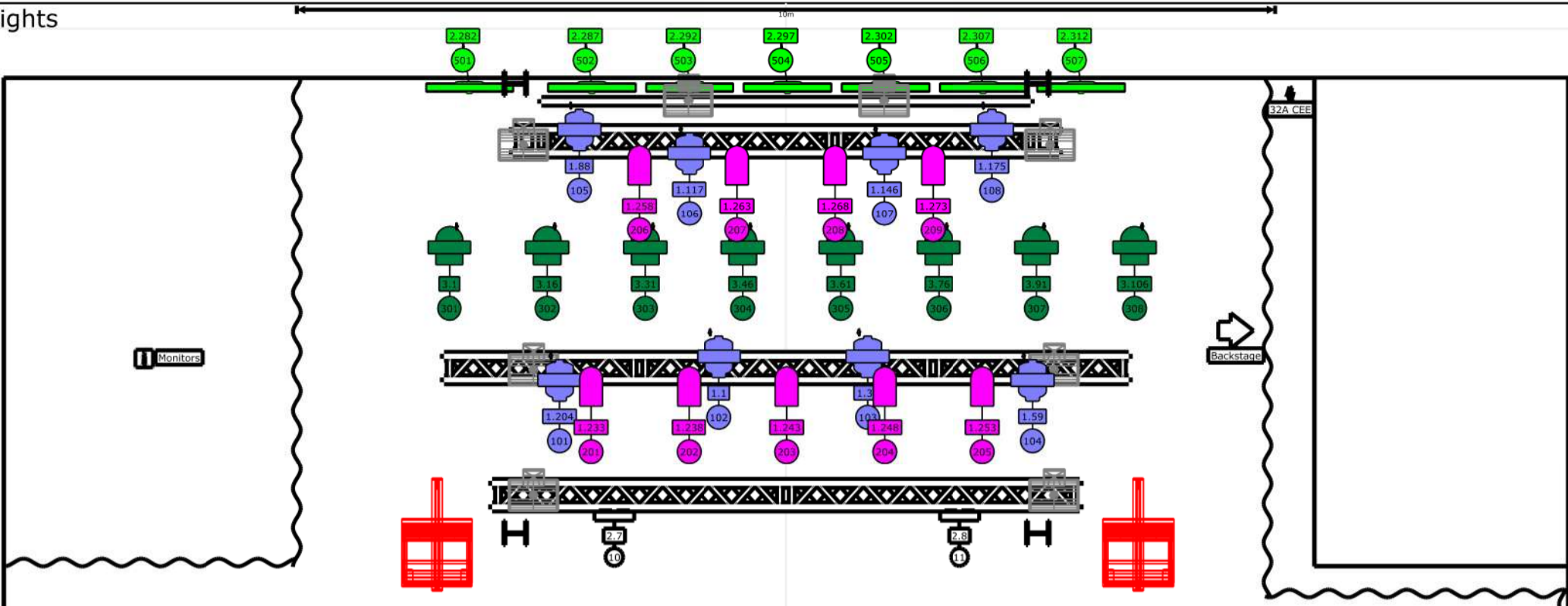









Fixture ID	Description	Location	Mode	Adres	Note
301	Showtec Tracker	Floor	15 CH	3.1	floor
302	Showtec Tracker	Floor	15 CH	3.16	floor
303	Showtec Tracker	Floor	15 CH	3.31	floor
304	Showtec Tracker	Floor	15 CH	3.46	floor
305	Showtec Tracker	Floor	15 CH	3.61	floor
306	Showtec Tracker	Floor	15 CH	3.76	floor
307	Showtec Tracker	Floor	15 CH	3.91	floor
308	Showtec Tracker	Floor	15 CH	3.106	floor
501	Showtec Spectral cyc2000	Floor	arc 2	2.282	floor
502	Showtec Spectral cyc2000	Floor	arc 2	2.287	floor
503	Showtec Spectral cyc2000	Floor	arc 2	2.292	floor
504	Showtec Spectral cyc2000	Floor	arc 2	2.297	floor
505	Showtec Spectral cyc2000	Floor	arc 2	2.302	floor
506	Showtec Spectral cyc2000	Floor	arc 2	2.307	floor
507	Showtec Spectral cyc2000	Floor	arc 2	2.312	floor
1	Front 1KW Fresnel	LX Carre	1 CH	2.1	LX CARRE
2	Front 1KW Fresnel	LX Carre	1 CH	2.2	LX CARRE
3	Front 1KW Fresnel	LX Carre	1 CH	2.3	LX CARRE
4	Front 1KW Fresnel	LX Carre	1 CH	2.4	LX CARRE
5	Front 1KW Fresnel	LX Carre	1 CH	2.5	LX CARRE
6	Front 1KW Fresnel	LX Carre	1 CH	2.6	LX CARRE
10	Blinder	LX Blind	1 CH	2.7	LX BLIND
11	Blinder	LX Blind	1 CH	2.8	LX BLIND
2001	Look Unique 2.1	Floor	2 CH	2.280	floor



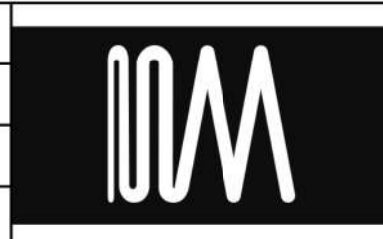
Project Grote Club			<p>D</p> <p>Documentnaam</p>
Projectlocatie Muziekgieterij Maastricht			
Klant MG TECH			
Naam ontwerper Guy van Noorden			
Projectdatum 2022			
Versie ontwerp V1.1			

Lights

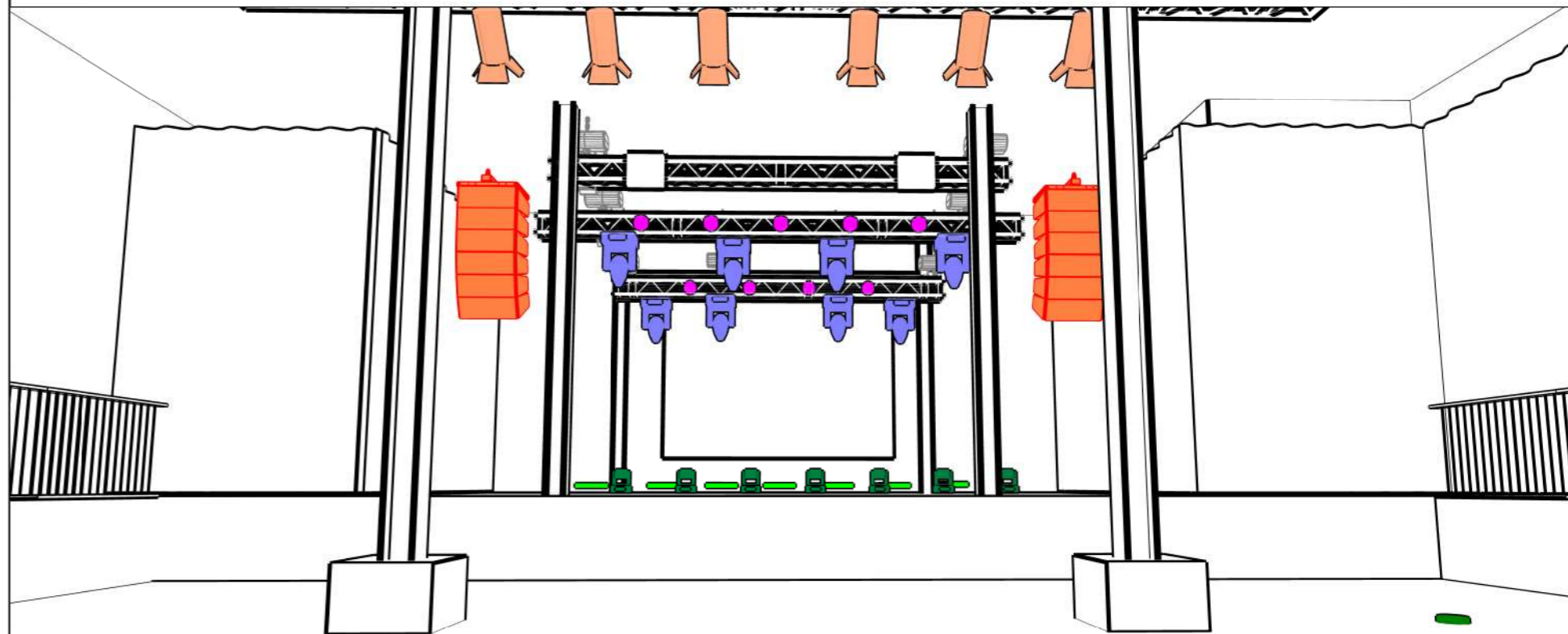
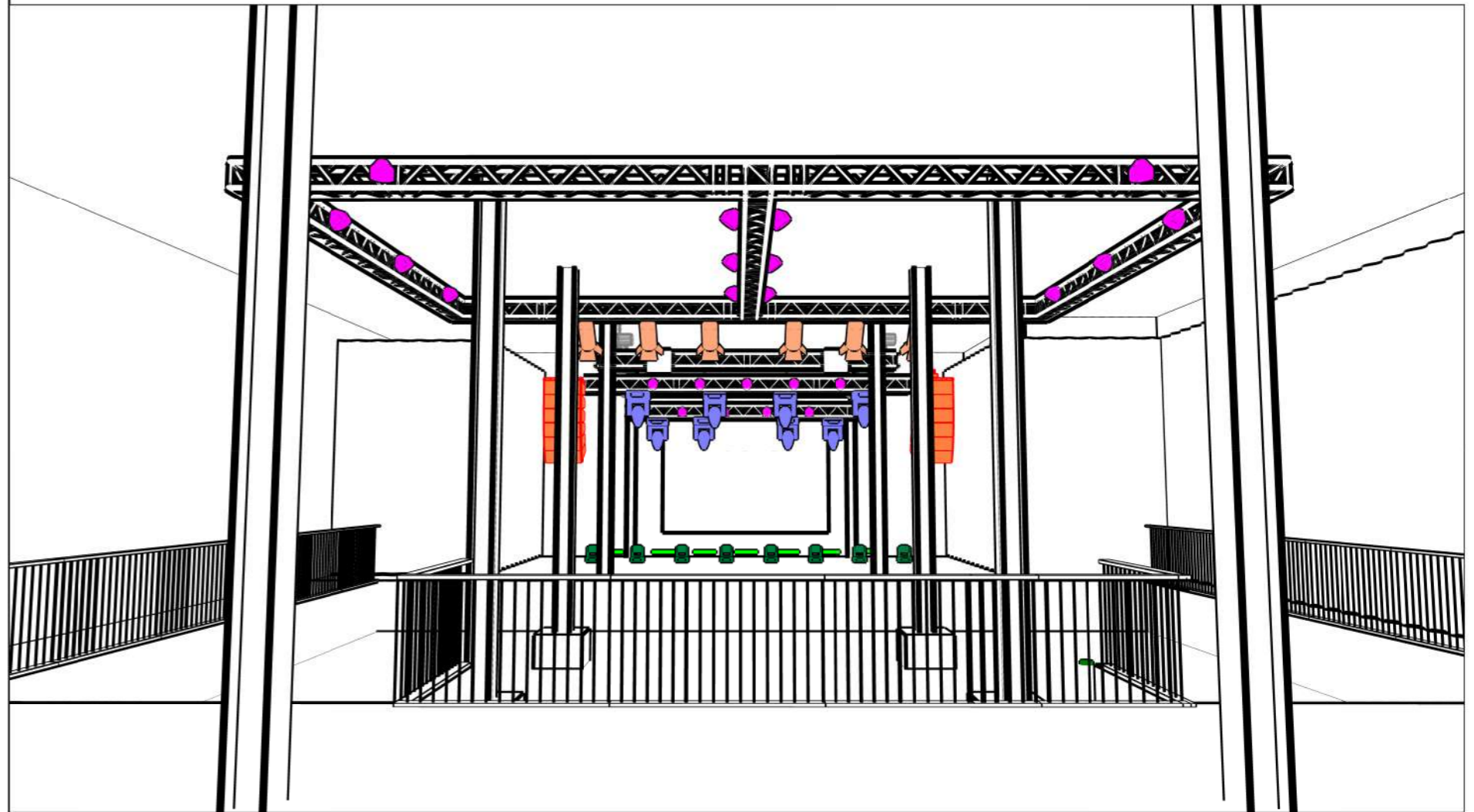
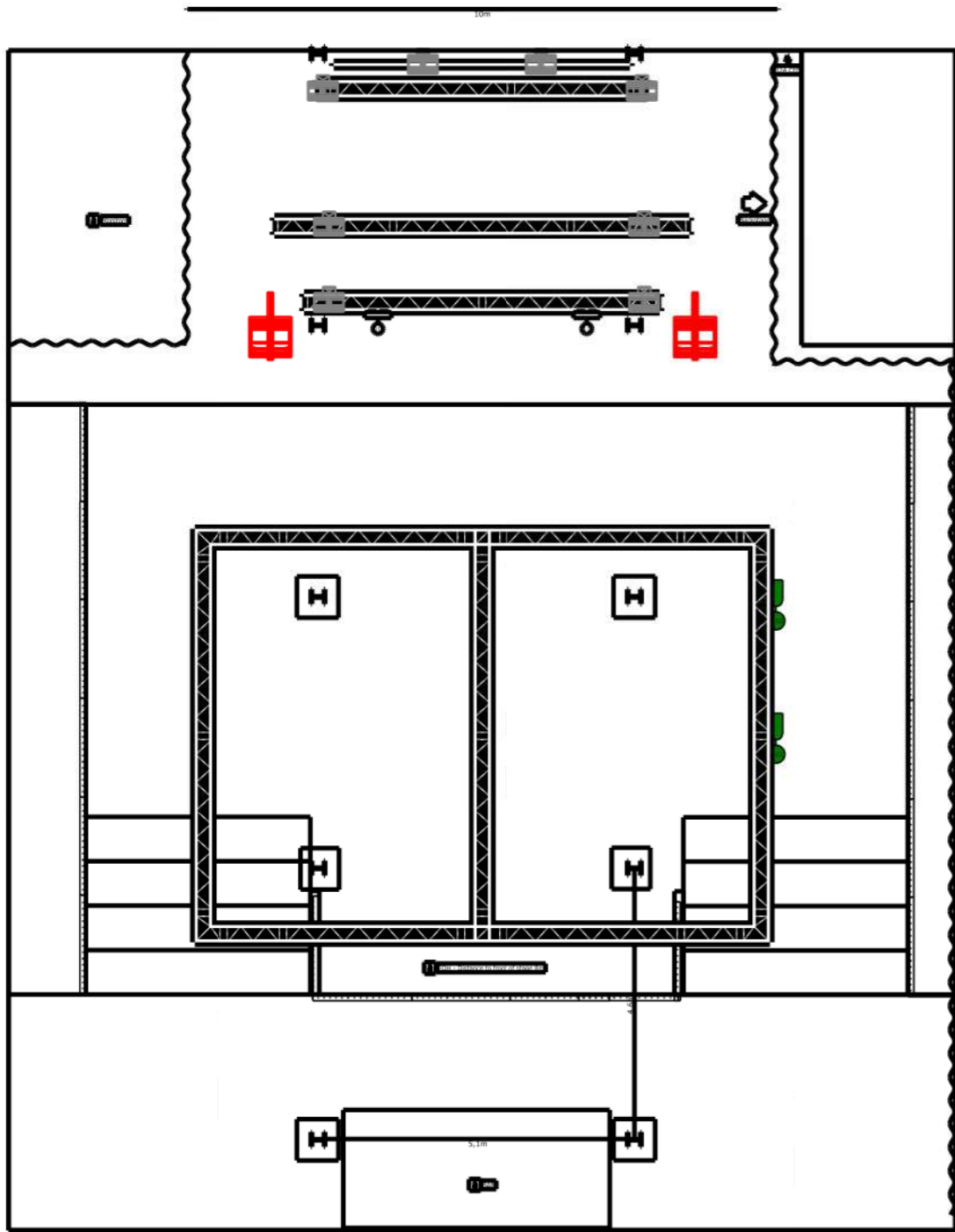


- Fixtures**
-  Showtec M800 Tour ARC+S (23)
  -  Robe ColorSpot 575 AT Mode 3 (8)
  -  Showtec Tracker Q4 Mode 3 15ch. (8)
  -  Spectral CYC2000 ARC2 (7)
  -  1kw Fresnel (6)
  -  Power Spot 9 Q5 5ch. (2)
  -  4-Light (2)

Project <b>Grote Club</b>	
Projectlocatie <b>Muziekgieterij Maastricht</b>	Projectdatum <b>2022</b>
Klant <b>MG TECH</b>	
Naam ontwerper <b>Guy van Noorden</b>	Versie ontwerp <b>V1.1</b>







Project: Grote Club		Year: 2022	
Client: Muziekgieterij Maastricht		Company: MG TECH	
Author: Guy van Noorden	Version: V1.1	Project: MG-SmallClub.1.1.c2p	Scale:

