



General information

Load in

Load-in takes place at the rear of the venue, entrance via Fransensingel 65, 6211 AB Maastricht (NL). Parking space is limited, so please let us know in advance by which means of transport you will be arriving.

Local crew

1x FOH engineer, 1x monitor engineer and 1x light engineer.

Backstage

Please notify us at least one week in advance if you have any dietary requirements (vegetarian, vegan, or fish only). The venue has 2 showers.

Barriers

The venue has no fixed barriers.

Merchandise

There is a merchandise booth available, free of charge. Please arrange your own seller and cardmachine. Muziekgieterij is a cashless venue. Signing after the show? Great! Please let us know in advance.

House-photographer

Our house-photographer would like to make a picture backstage before the show. Please let us know if not allowed.

Payments

We don't do any cash payments. All payments will be done via bank transfers. NO payment will be made without receiving a copy of a passport from ALL artists.

Smoking

Please note that by the 1st of July 2008 it is no longer permitted to smoke in clubs/pubs/restaurants and venues in the Netherlands. The law includes stage, backstage and dressing rooms. We kindly ask for your cooperation. Please use our backstage smoking area for smoking.

Prohibited

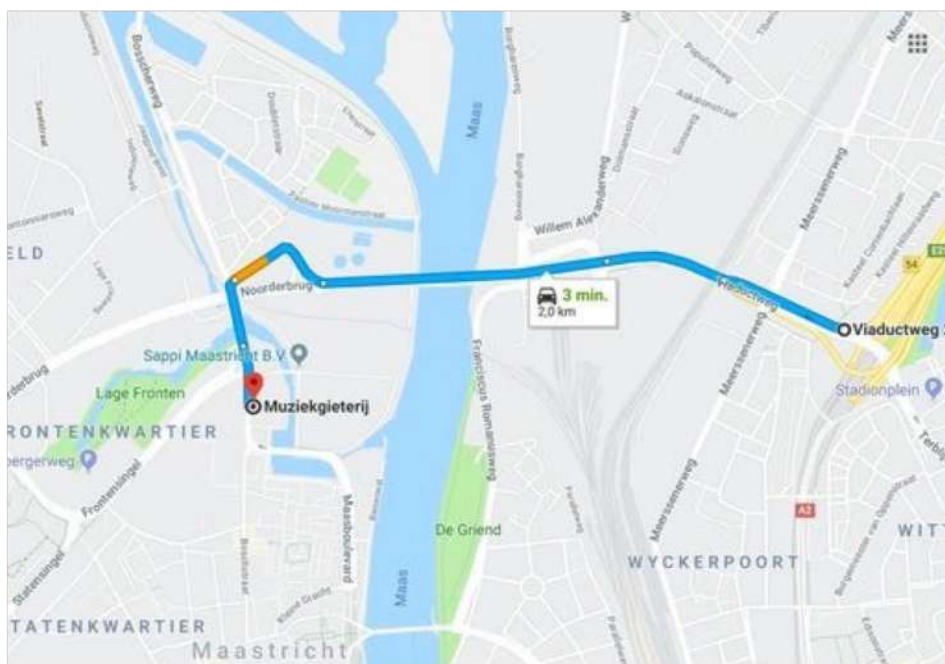
Graffiti, use of (fake)blood, pyrotechnics, confetti, streamers, snow bubble blowers or similar products that may harm our light and/or sound system is prohibited. You will be charged €200 excl. VAT for cleaning and all damage caused by band- or crew members will be charged.

Insurance

All damage caused by band- or crew members on property of the venue (such as microphones, mixing consoles, dressing rooms, monitors etc.) will be charged to the band/crew on the day of the performance.

Route

Backstage entrance /parking
Fransensingel 65
6211 AB Maastricht



Audio

PA system

Adamson E12 arrays	16x
Adamson IS10P infills	4x
Adamson E119 subs	10x

Amping & processing

Labgruppen D120L	6x
Labgruppen D200L	2x
Labgruppen D80L	1x

Lake LM44	2x
-----------	----

FoH console

Soundcraft Vi5000

Main PA input

AES/Analogue at FoH
or stageright/stageleft

Distance stage to FoH

10m/32.8ft

Patchbay FoH to stageright

Optical fibre	2x
Cat6	8x
SDI	8x
XLR in or out	12x

*Cable length =
35m/114.8ft*

*5m patch cables
available*

Wedges

Adamson M212 wedge	12x
Adamson IS119 (sub)	2x

*9 wedge mixes (incl. PFL) +
2 sub mixes available*

Amping & processing

Labgruppen D120	5x
-----------------	----

Monitor console

Soundcraft Vi3000

Patchbay stageleft to stageright

Optical fibre	1x
Cat6	4x
SDI	4x
AES	4x

*Cable length =
15m/49.2ft*

5m patch cables available

**The venue has a sound pressure limit of
103 dB(A) LEQ-15 measured the FoH position**

We expect bands and their crews to respect this limit!

Microphones

Shure Beta 52	2x
Shure Beta 91	2x
Shure SM57	10x
Shure SM58	12x
Shure Beta 58a	10x

AKG D112	2x
AKG C451b	2x
AKG C414	4x

Sennheiser E906	4x
Sennheiser E904	6x
Sennheiser MD421	4x

EV Re20	1x
Neumann KM184	2x

DI's

Radial J48	11x
Radial J48 Stereo	6x

Microphone stands

K&M Tall Boom	24x
K&M Short Boom	16x

Lights

Light desk

High End Fullboard
4

Power & DMX

FoH

230v 3x
Cat 6 1x

Front

Infinity TF300 6x
Robe 150 6x

Front portal

Infinity TF300 3x

Hazer

Look Unique 2.1 2x
CLF Turbine fans 2x

Lights stage

Robe 150 18x
Robe Esprite M1 12x
Showtec Dataflash 22x
Showtec Led stageblinder 1 23x
Showtec Led stageblinder 4 6x

Lights stage side

Robe 150 6x
Robe Spikie 6x

Floor lights

Robe 150 6x
Robe Spikie 6x

Dimmerpack

32a/6 channel 240v 16a 1x

Stage

Stage dimensions

Height 1.4m/4.5ft
Width 12m/39,3ft
Depth 8m/26,2ft

Scene Opening 8m/26,2ft
Clearance 11m/36ft

Backdrop

Length 10m/32,8ft
Width 10m/32,8ft

Max weight 440kg/970lbs

Additional power

Stage

1x 63A CEE Stageleft
1x 63A CEE Stageright
1x 32A CEE Stageright

14x 230v Shuko Backline power

FoH

1x 32A CEE
6x 230v Shuko

Main hall



Count	Description	Mode	Node specs	
12X	Robe esprite	Mode 1	Protocol:	SACN
36X	Robe Ledbeam 150	Mode 1	Adres node 1:	2.0.0.1.
12X	Robe Spikie	Mode 1	Adres node 2:	2.0.0.100.
9X	Infinity TF-300	Basic	Adres Full Boar 4:	2.0.0.2.
6X	Showtec stageblinder 4	5 CH	House SACN priority:	50
23X	Showtec stageblinder 1	2 CH	Guest SACN priority:	100
22X	Showtec Dataflash	3 CH		
72X	Showtec power spot 9 Q5	7 CH		
2X	Look Unique 2.1 (same adres)	2 CH		
2X	CLF stagefan (same adres)	1 CH		
1X	Full Boar 4			

Exrta info

We have 2 nodes, 1 node for controlling the main hall lights and an extra one.
 In total we can control 16 universes, we have 8 universes in use.
 The Full Boar 4 only support 12 universes.
 On the second node you have 8 free universes at your disposal.
 You can connect to the system from the FOH, stage, 1st balcony and 2nd balcony.
 These connections go through a closed network.

If you have any questions, please send us an email.

Muziekgieterij Maastricht

Main hall Lighting Patch

V1 23-10-2022

House sacn priority: 50

Guest sacn priority: 100

Node 1: 2.0.0.1.

Node 2: 2.0.0.100.

Full Boar 4: 2.0.0.2.



Fixture ID	Description	Location	Mode	Adres	Note
1	Infinity TF-300	LX Front	Basic	5.1	
2	Infinity TF-300	LX Front	Basic	5.4	
3	Infinity TF-300	LX Front	Basic	5.7	
4	Infinity TF-300	LX Front	Basic	5.10	
5	Infinity TF-300	LX Front	Basic	5.13	
6	Infinity TF-300	LX Front	Basic	5.16	
7	Infinity TF-300	LX Blind	Basic	5.19	
8	Infinity TF-300	LX Blind	Basic	5.22	
9	Infinity TF-300	LX Blind	Basic	5.25	
231	Robe Ledbeam 150	LX Front	1	5.209	
232	Robe Ledbeam 150	LX Front	1	5.231	
233	Robe Ledbeam 150	LX Front	1	5.253	
234	Robe Ledbeam 150	LX Front	1	5.275	
235	Robe Ledbeam 150	LX Front	1	5.297	
236	Robe Ledbeam 150	LX Front	1	5.319	
101	Robe esprite	LX 2	1	2.1	
102	Robe esprite	LX 2	1	2.50	
103	Robe esprite	LX 2	1	2.99	
104	Robe esprite	LX 2	1	2.146	
105	Robe esprite	LX 2	1	2.197	
106	Robe esprite	LX 2	1	2.246	
107	Robe esprite	LX 3	1	3.1	
108	Robe esprite	LX 3	1	3.50	
109	Robe esprite	LX 3	1	3.99	
110	Robe esprite	LX 3	1	3.146	
111	Robe esprite	LX 3	1	3.197	
112	Robe esprite	LX 3	1	3.246	
201	Robe Ledbeam 150	LX 1	1	1.361	
202	Robe Ledbeam 150	LX 1	1	1.383	
203	Robe Ledbeam 150	LX 1	1	1.405	
204	Robe Ledbeam 150	LX 1	1	1.427	
205	Robe Ledbeam 150	LX 1	1	1.449	
206	Robe Ledbeam 150	LX 1	1	1.471	
207	Robe Ledbeam 150	LX 2	1	2.361	
208	Robe Ledbeam 150	LX 2	1	2.383	
209	Robe Ledbeam 150	LX 2	1	2.405	
210	Robe Ledbeam 150	LX 2	1	2.427	

Muziekgieterij Maastricht

Main hall Lighting Patch

V1 23-10-2022

House sacn priority: 50

Guest sacn priority: 100

Node 1: 2.0.0.1.

Node 2: 2.0.0.100.

Full Boar 4: 2.0.0.2.



Fixture ID	Description	Location	Mode	Adres	Note
211	Robe Ledbeam 150	LX 2	1	2.449	
212	Robe Ledbeam 150	LX 2	1	2.471	
213	Robe Ledbeam 150	LX 3	1	3.361	
214	Robe Ledbeam 150	LX 3	1	3.383	
215	Robe Ledbeam 150	LX 3	1	3.405	
216	Robe Ledbeam 150	LX 3	1	3.427	
217	Robe Ledbeam 150	LX 3	1	3.449	
218	Robe Ledbeam 150	LX 3	1	3.471	
219	Robe Ledbeam 150	Floor	1	6.1	
220	Robe Ledbeam 150	Floor	1	6.23	
221	Robe Ledbeam 150	Floor	1	6.45	
222	Robe Ledbeam 150	Floor	1	6.67	
223	Robe Ledbeam 150	Floor	1	6.89	
224	Robe Ledbeam 150	Floor	1	6.111	
307	Robe Spikie	Floor	1	6.133	
308	Robe Spikie	Floor	1	6.160	
309	Robe Spikie	Floor	1	6.187	
310	Robe Spikie	Floor	1	6.214	
311	Robe Spikie	Floor	1	6.241	
312	Robe Spikie	Floor	1	6.268	
301	Robe Spikie	Stage right	1	8.295	
302	Robe Spikie	Stage right	1	8.322	
303	Robe Spikie	Stage right	1	8.349	
304	Robe Spikie	Stage left	1	7.267	
305	Robe Spikie	Stage left	1	7.294	
306	Robe Spikie	Stage left	1	7.321	
225	Robe Ledbeam 150	Stage right	1	8.403	
226	Robe Ledbeam 150	Stage right	1	8.425	
227	Robe Ledbeam 150	Stage right	1	8.447	
228	Robe Ledbeam 150	Stage left	1	7.375	
229	Robe Ledbeam 150	Stage left	1	7.397	
230	Robe Ledbeam 150	Stage left	1	7.419	
801	Showtec Dataflash	LX 1	3 CH	4.47	
802	Showtec Dataflash	LX 1	3 CH	4.50	
803	Showtec Dataflash	LX 1	3 CH	4.53	
804	Showtec Dataflash	LX 1	3 CH	4.56	

Muziekgieterij Maastricht

Main hall Lighting Patch

V1 23-10-2022

House sacn priority: 50

Guest sacn priority: 100

Node 1: 2.0.0.1.

Node 2: 2.0.0.100.

Full Boar 4: 2.0.0.2.



Fixture ID	Description	Location	Mode	Adres	Note
805	Showtec Dataflash	LX 1	3 CH	4.59	
806	Showtec Dataflash	LX 1	3 CH	4.62	
807	Showtec Dataflash	LX 1	3 CH	4.65	
808	Showtec Dataflash	LX 2	3 CH	4.68	
809	Showtec Dataflash	LX 2	3 CH	4.71	
810	Showtec Dataflash	LX 2	3 CH	4.74	
811	Showtec Dataflash	LX 2	3 CH	4.77	
812	Showtec Dataflash	LX 2	3 CH	4.80	
813	Showtec Dataflash	LX 2	3 CH	4.83	
814	Showtec Dataflash	LX 2	3 CH	4.86	
815	Showtec Dataflash	LX 2	3 CH	4.89	
816	Showtec Dataflash	LX 3	3 CH	4.92	
817	Showtec Dataflash	LX 3	3 CH	4.95	
818	Showtec Dataflash	LX 3	3 CH	4.98	
819	Showtec Dataflash	LX 3	3 CH	4.101	
820	Showtec Dataflash	LX 3	3 CH	4.104	
821	Showtec Dataflash	LX 3	3 CH	4.107	
822	Showtec Dataflash	LX 3	3 CH	4.110	
601	Showtec stageblinder 4	LX Blind	5 CH	5.28	
602	Showtec stageblinder 4	LX Blind	5 CH	5.33	
603	Showtec stageblinder 4	LX Blind	5 CH	5.38	
604	Showtec stageblinder 4	LX Blind	5 CH	5.43	
605	Showtec stageblinder 4	LX Blind	5 CH	5.48	
606	Showtec stageblinder 4	LX Blind	5 CH	5.53	
31	Showtec stageblinder 1	LX 1	2 CH	4.1	
32	Showtec stageblinder 1	LX 1	2 CH	4.3	
33	Showtec stageblinder 1	LX 1	2 CH	4.5	
34	Showtec stageblinder 1	LX 1	2 CH	4.7	
35	Showtec stageblinder 1	LX 1	2 CH	4.9	
36	Showtec stageblinder 1	LX 1	2 CH	4.11	
37	Showtec stageblinder 1	LX 1	2 CH	4.13	
38	Showtec stageblinder 1	LX 1	2 CH	4.15	
39	Showtec stageblinder 1	LX 2	2 CH	4.17	
40	Showtec stageblinder 1	LX 2	2 CH	4.19	
41	Showtec stageblinder 1	LX 2	2 CH	4.21	
42	Showtec stageblinder 1	LX 2	2 CH	4.23	
43	Showtec stageblinder 1	LX 2	2 CH	4.25	
44	Showtec stageblinder 1	LX 2	2 CH	4.27	

Muziekgieterij Maastricht

Main hall Lighting Patch

V1 23-10-2022

House sacn priority: 50

Guest sacn priority: 100

Node 1: 2.0.0.1.

Node 2: 2.0.0.100.

Full Boar 4: 2.0.0.2.



Fixture ID	Description	Location	Mode	Adres	Note
45	Showtec stageblinder 1	LX 2	2 CH	4.29	
46	Showtec stageblinder 1	LX 3	2 CH	4.31	
47	Showtec stageblinder 1	LX 3	2 CH	4.33	
48	Showtec stageblinder 1	LX 3	2 CH	4.35	
49	Showtec stageblinder 1	LX 3	2 CH	4.37	
50	Showtec stageblinder 1	LX 3	2 CH	4.39	
51	Showtec stageblinder 1	LX 3	2 CH	4.41	
52	Showtec stageblinder 1	LX 3	2 CH	4.43	
53	Showtec stageblinder 1	LX 3	2 CH	4.45	
1001	Showtec power spot 9 Q5	Hall Up	7 CH	7.1	
1002	Showtec power spot 9 Q5	Hall Up	7 CH	7.8	
1003	Showtec power spot 9 Q5	Hall Up	7 CH	7.15	
1004	Showtec power spot 9 Q5	Hall Up	7 CH	7.22	
1005	Showtec power spot 9 Q5	Hall Up	7 CH	7.29	
1006	Showtec power spot 9 Q5	Hall Up	7 CH	7.36	
1007	Showtec power spot 9 Q5	Hall Up	7 CH	7.43	
1008	Showtec power spot 9 Q5	Hall Up	7 CH	7.50	
1009	Showtec power spot 9 Q5	Hall Up	7 CH	7.57	
1010	Showtec power spot 9 Q5	Hall Up	7 CH	7.64	
1011	Showtec power spot 9 Q5	Hall Up	7 CH	7.71	
1012	Showtec power spot 9 Q5	Hall Up	7 CH	7.78	
1013	Showtec power spot 9 Q5	Hall Up	7 CH	7.85	
1014	Showtec power spot 9 Q5	Hall Up	7 CH	7.92	
1015	Showtec power spot 9 Q5	Hall Up	7 CH	7.99	
1016	Showtec power spot 9 Q5	Hall Up	7 CH	7.106	
1017	Showtec power spot 9 Q5	Hall Up	7 CH	7.113	
1018	Showtec power spot 9 Q5	Hall Up	7 CH	7.120	
1019	Showtec power spot 9 Q5	Hall Up	7 CH	7.127	
1020	Showtec power spot 9 Q5	Hall Up	7 CH	7.134	
1021	Showtec power spot 9 Q5	Hall Up	7 CH	7.141	
1022	Showtec power spot 9 Q5	Hall Up	7 CH	7.148	
1023	Showtec power spot 9 Q5	Hall Up	7 CH	7.155	
1024	Showtec power spot 9 Q5	Hall Up	7 CH	7.162	
1025	Showtec power spot 9 Q5	Hall Up	7 CH	7.169	
1026	Showtec power spot 9 Q5	Hall Up	7 CH	7.176	
1027	Showtec power spot 9 Q5	Hall Up	7 CH	7.183	
1028	Showtec power spot 9 Q5	Hall Up	7 CH	7.190	
1029	Showtec power spot 9 Q5	Hall Up	7 CH	7.197	
1030	Showtec power spot 9 Q5	Hall Up	7 CH	7.204	

Muziekgieterij Maastricht

Main hall Lighting Patch

V1 23-10-2022

Node 1: 2.0.0.1.

Node 2: 2.0.0.100.

House sacn priority: 50

Guest sacn priority: 100

Full Boar 4: 2.0.0.2.



Fixture ID	Description	Location	Mode	Adres	Note
1031	Showtec power spot 9 Q5	Hall Up	7 CH	7.211	
1032	Showtec power spot 9 Q5	Hall Up	7 CH	7.218	
1033	Showtec power spot 9 Q5	Hall Up	7 CH	7.225	
1034	Showtec power spot 9 Q5	Hall Up	7 CH	7.232	
1035	Showtec power spot 9 Q5	Hall Up	7 CH	7.239	
1036	Showtec power spot 9 Q5	Hall Up	7 CH	7.246	
1101	Showtec power spot 9 Q5	Hall Down	7 CH	8.1	
1102	Showtec power spot 9 Q5	Hall Down	7 CH	8.8	
1103	Showtec power spot 9 Q5	Hall Down	7 CH	8.15	
1104	Showtec power spot 9 Q5	Hall Down	7 CH	8.22	
1105	Showtec power spot 9 Q5	Hall Down	7 CH	8.29	
1106	Showtec power spot 9 Q5	Hall Down	7 CH	8.36	
1107	Showtec power spot 9 Q5	Hall Down	7 CH	8.43	
1108	Showtec power spot 9 Q5	Hall Down	7 CH	8.50	
1109	Showtec power spot 9 Q5	Hall Down	7 CH	8.57	
1110	Showtec power spot 9 Q5	Hall Down	7 CH	8.64	
1111	Showtec power spot 9 Q5	Hall Down	7 CH	8.71	
1112	Showtec power spot 9 Q5	Hall Down	7 CH	8.78	
1113	Showtec power spot 9 Q5	Hall Down	7 CH	8.85	
1114	Showtec power spot 9 Q5	Hall Down	7 CH	8.92	
1115	Showtec power spot 9 Q5	Hall Down	7 CH	8.99	
1116	Showtec power spot 9 Q5	Hall Down	7 CH	8.106	
1117	Showtec power spot 9 Q5	Hall Down	7 CH	8.113	
1118	Showtec power spot 9 Q5	Hall Down	7 CH	8.120	
1119	Showtec power spot 9 Q5	Hall Down	7 CH	8.127	
1120	Showtec power spot 9 Q5	Hall Down	7 CH	8.134	
1121	Showtec power spot 9 Q5	Hall Down	7 CH	8.141	
1122	Showtec power spot 9 Q5	Hall Down	7 CH	8.148	
1123	Showtec power spot 9 Q5	Hall Down	7 CH	8.155	
1124	Showtec power spot 9 Q5	Hall Down	7 CH	8.162	
1125	Showtec power spot 9 Q5	Hall Down	7 CH	8.169	
1126	Showtec power spot 9 Q5	Hall Down	7 CH	8.176	
1127	Showtec power spot 9 Q5	Hall Down	7 CH	8.183	
1128	Showtec power spot 9 Q5	Hall Down	7 CH	8.190	
1129	Showtec power spot 9 Q5	Hall Down	7 CH	8.197	
1130	Showtec power spot 9 Q5	Hall Down	7 CH	8.204	
1131	Showtec power spot 9 Q5	Hall Down	7 CH	8.211	
1132	Showtec power spot 9 Q5	Hall Down	7 CH	8.218	
1133	Showtec power spot 9 Q5	Hall Down	7 CH	8.225	
1134	Showtec power spot 9 Q5	Hall Down	7 CH	8.232	

Muziekgieterij Maastricht

Main hall Lighting Patch

V1 23-10-2022

House sacn priority: 50

Guest sacn priority: 100

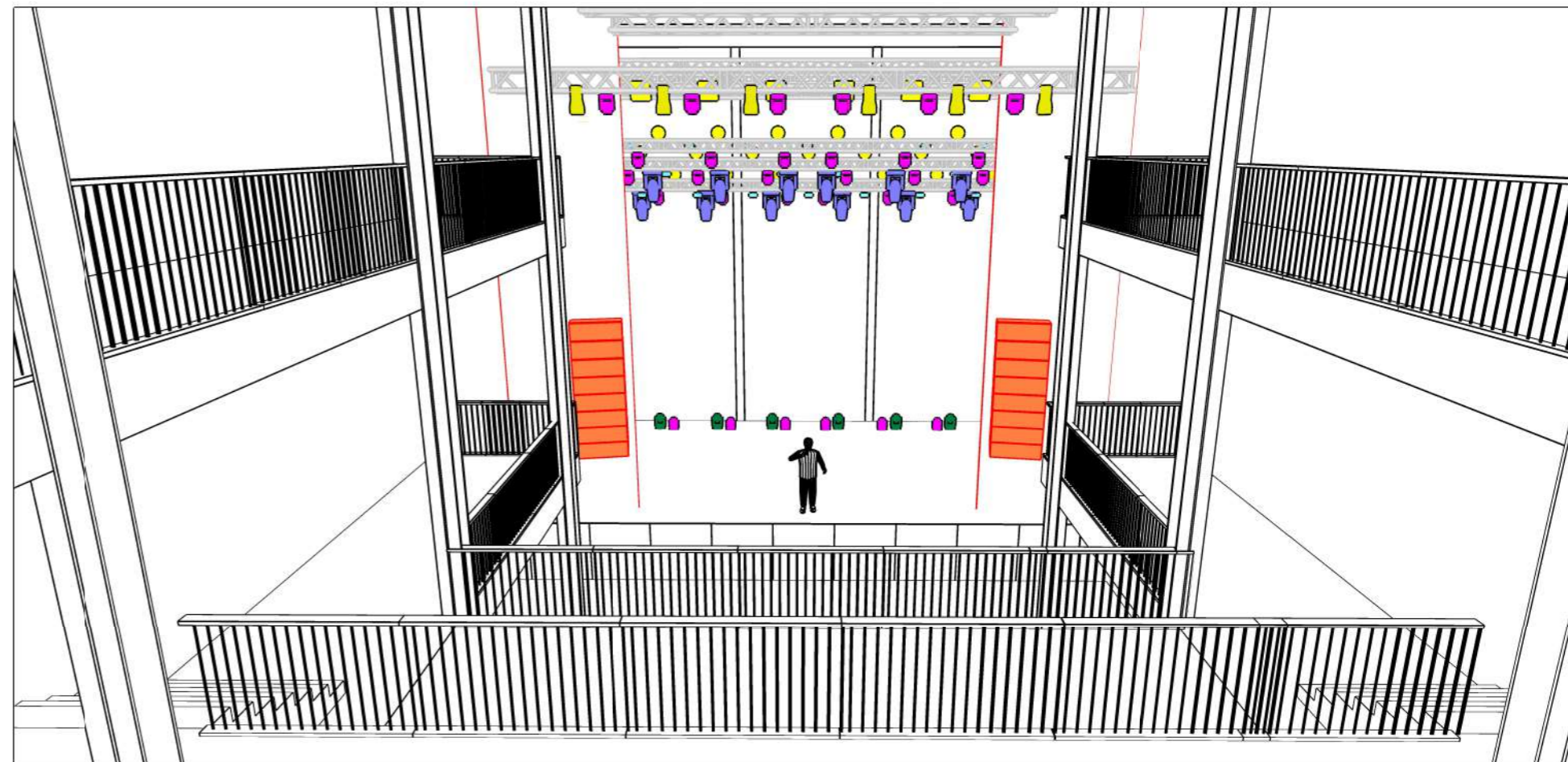
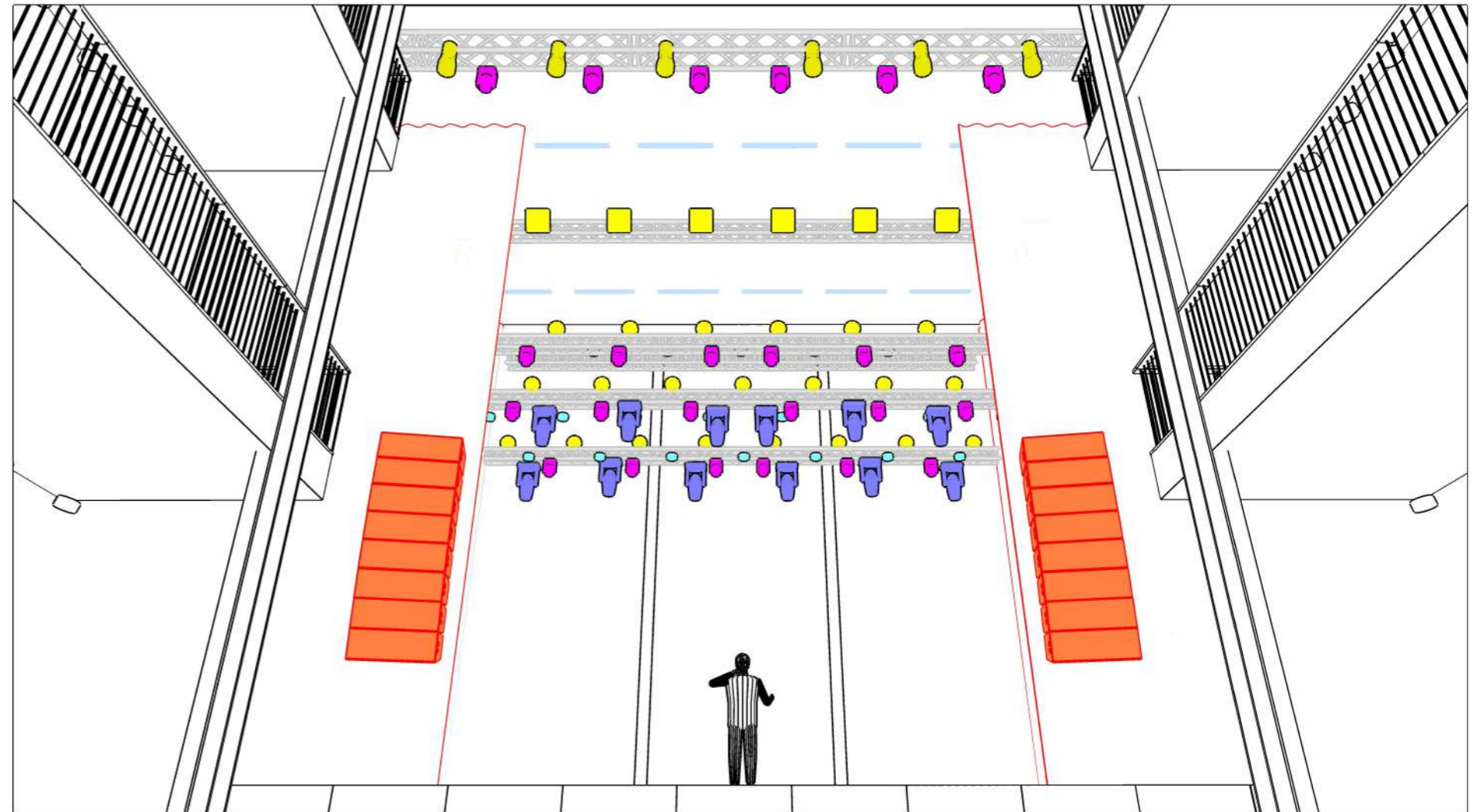
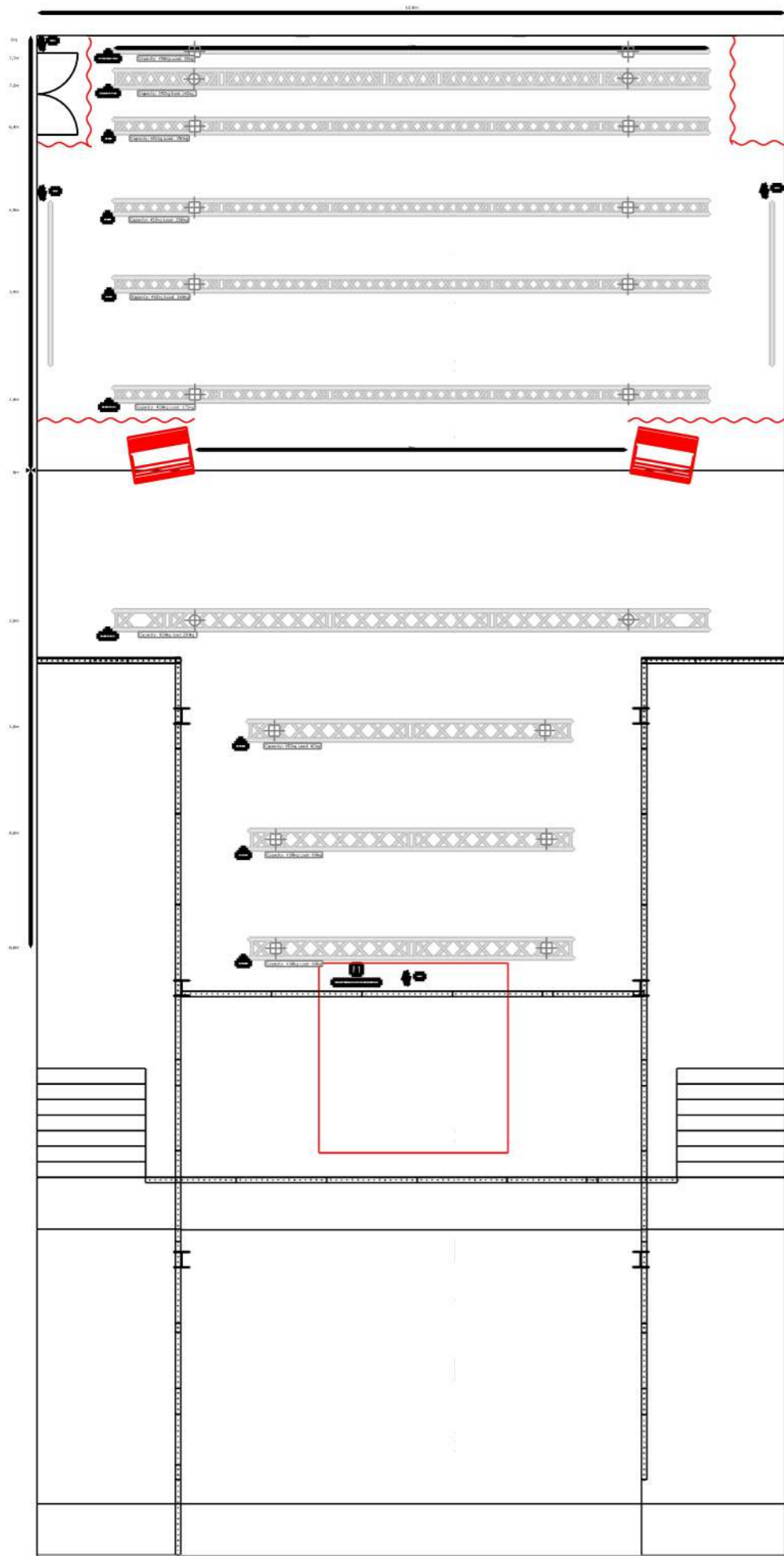
Node 1: 2.0.0.1.

Node 2: 2.0.0.100.

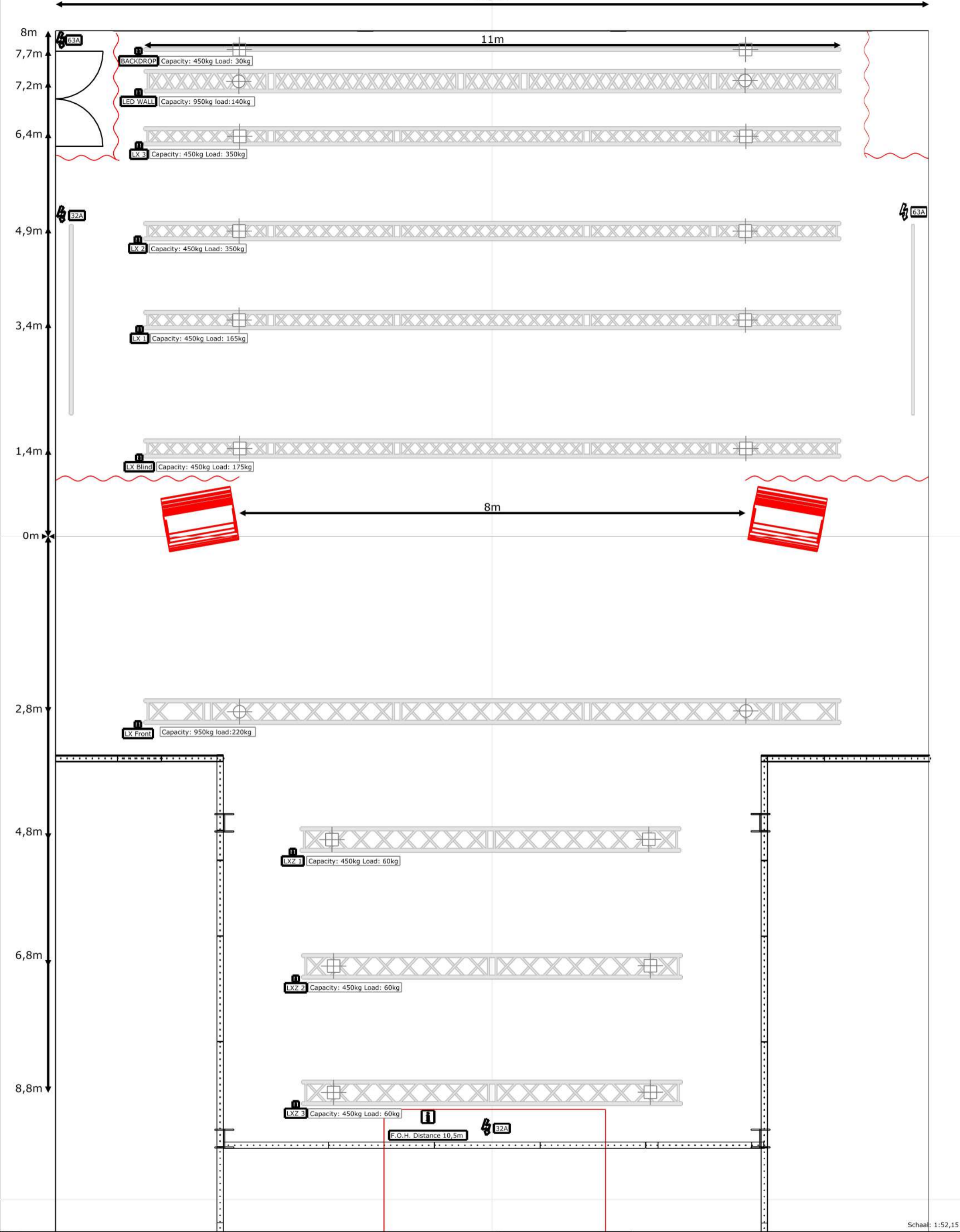
Full Boar 4: 2.0.0.2.



Fixture ID	Description	Location	Mode	Adres	Note
1135	Showtec power spot 9 Q5	Hall Down	7 CH	8.239	
1136	Showtec power spot 9 Q5	Hall Down	7 CH	8.246	
2001	Look Unique 2.1	Floor	2 CH	6.498	<i>2 hazers on same adres</i>
2002	CLF stagefan	Floor	1 CH	6.500	<i>2 fans on same adres</i>

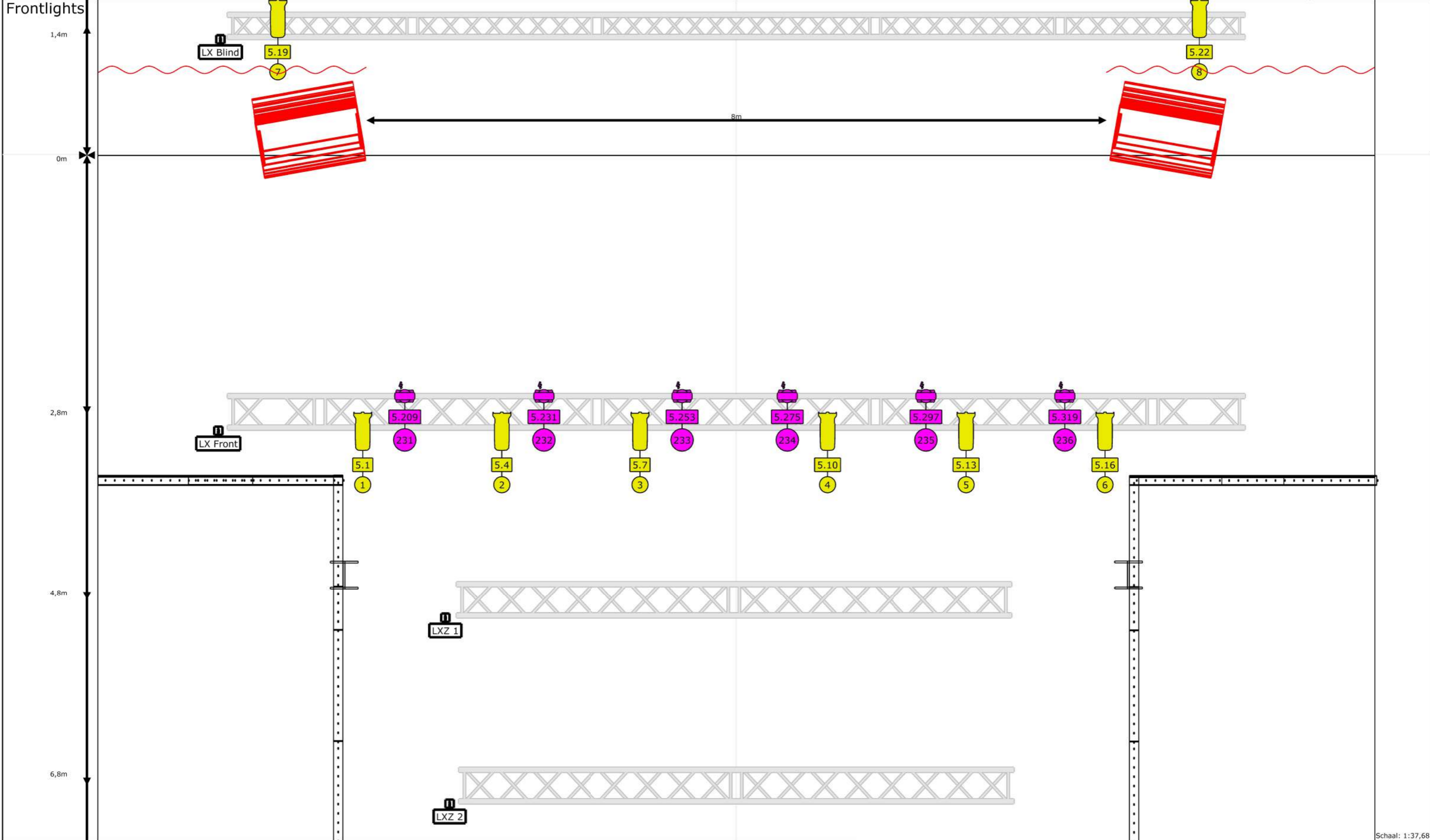


Rigging/Dimensions



Schaal: 1:52,15

Project Grote Club		
Projectlocatie Muziekgieterij Maastricht	Projectdatum 2020	
Klant MG TECH		
Naam ontwerper Guy van Noorden	Versie ontwerp V3.3.1	
		Bestandsnaam MG3.3.1.c2p
		Documentnaam



Schaal: 1:37,68

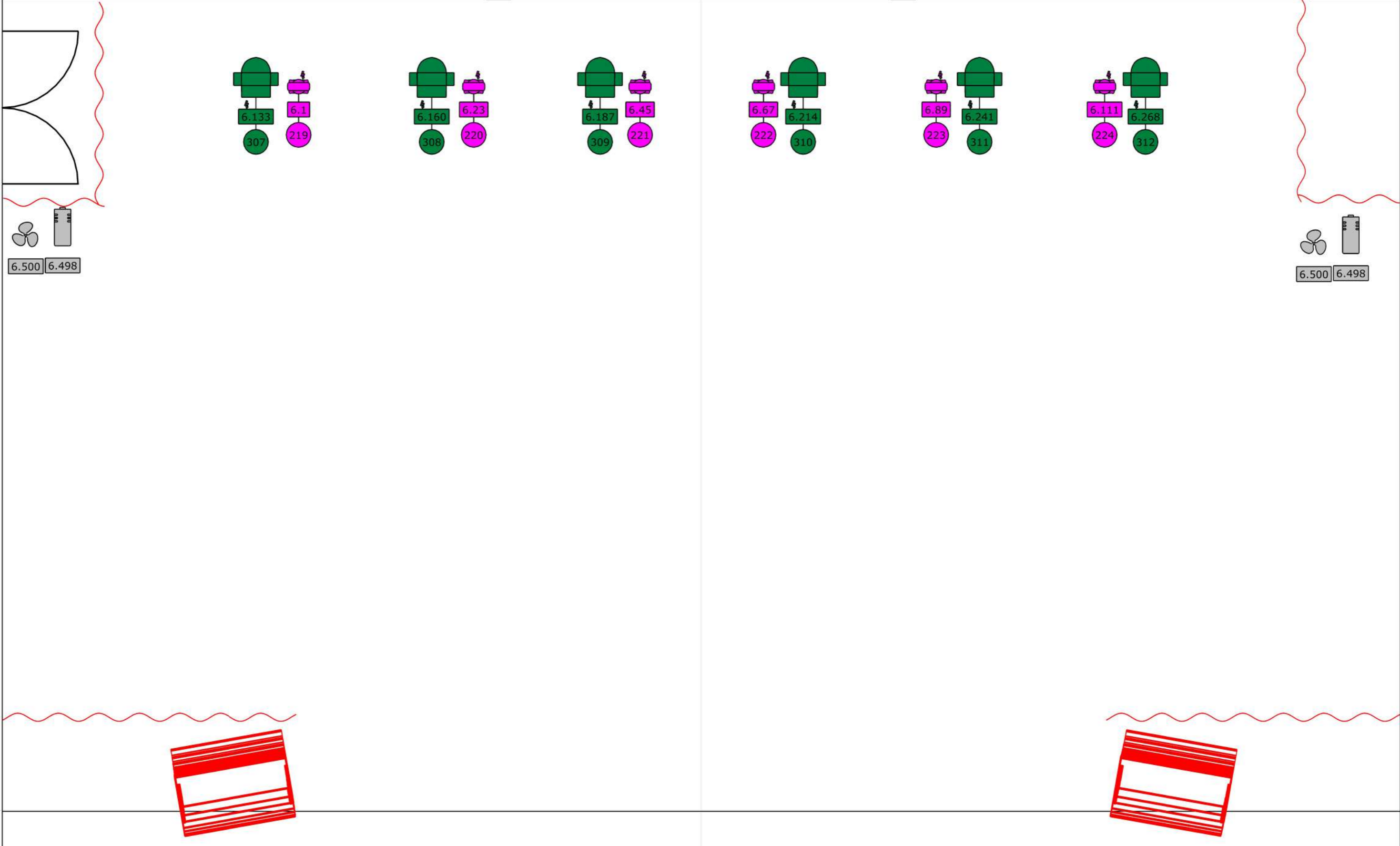
Project Grote Club	
Projectlocatie Muziekgieterij Maastricht	Projectdatum 2020
Klant MG TECH	
Naam ontwerper Guy van Noorden	Versie ontwerp V3.3.1



Bestandsnaam
MG3.3.1.c2p

Documentnaam

Legende symbolen	
	Robin LEDBeam 150
	TF-300 Fresnel (6)

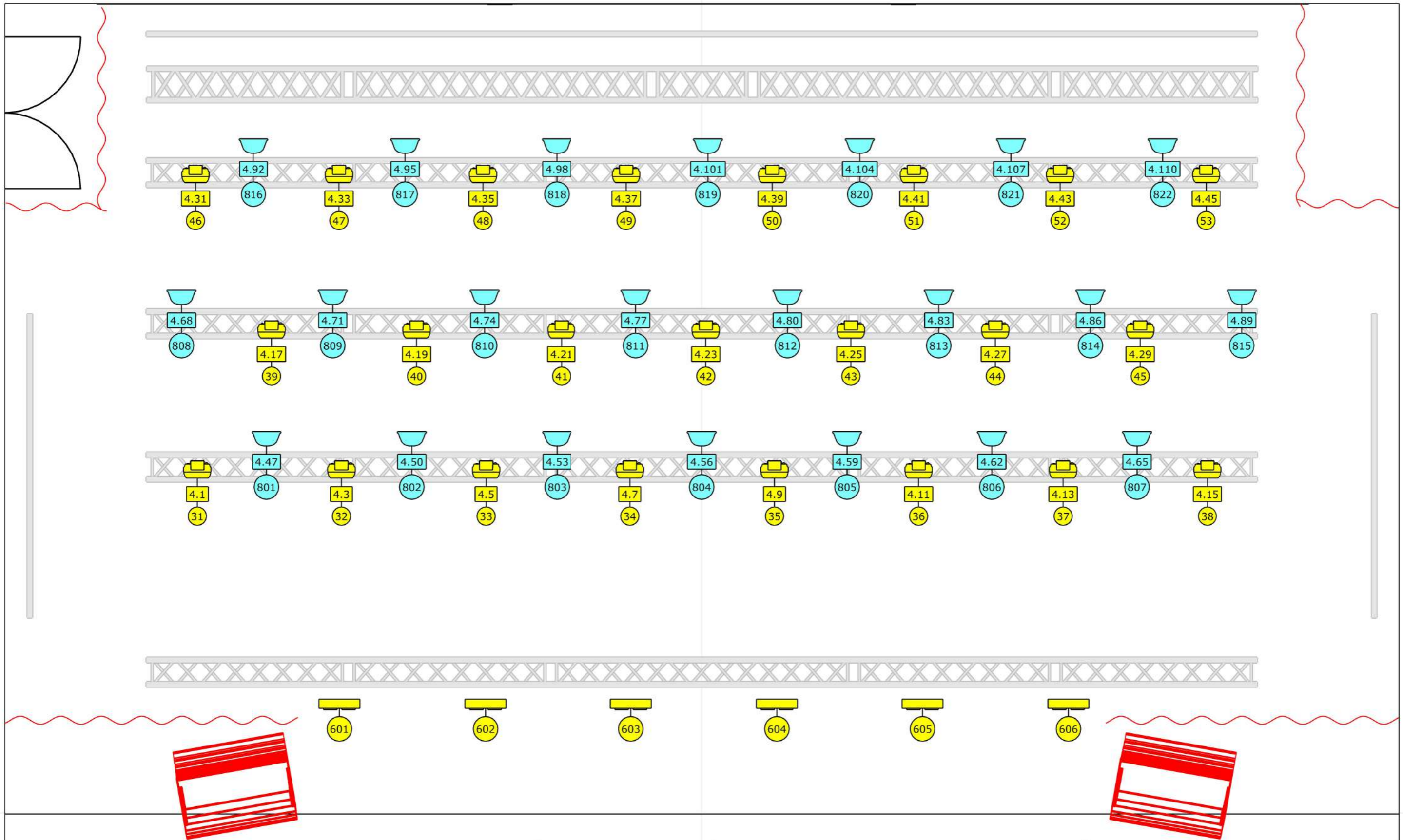


Project Grote Club	
Projectlocatie Muziekgieterij Maastr	Projectdatum 2020
Klant MG TECH	
Naam ontwerper Guy van Noorden	Versie ontwerp V3.3.1



Bestandsnaam MG3.3.1.c2p	Documentnaam
------------------------------------	--------------

Legende symbolen	
	Robin LEDBeam 150
	Robin Spikie



Schaal: 1:36,39




Project Grote Club	
Projectlocatie Muziekgieterij Maastricht	Projectdatum 2020
Klant MG TECH	
Naam ontwerper Guy van Noorden	Versie ontwerp V3.3.1

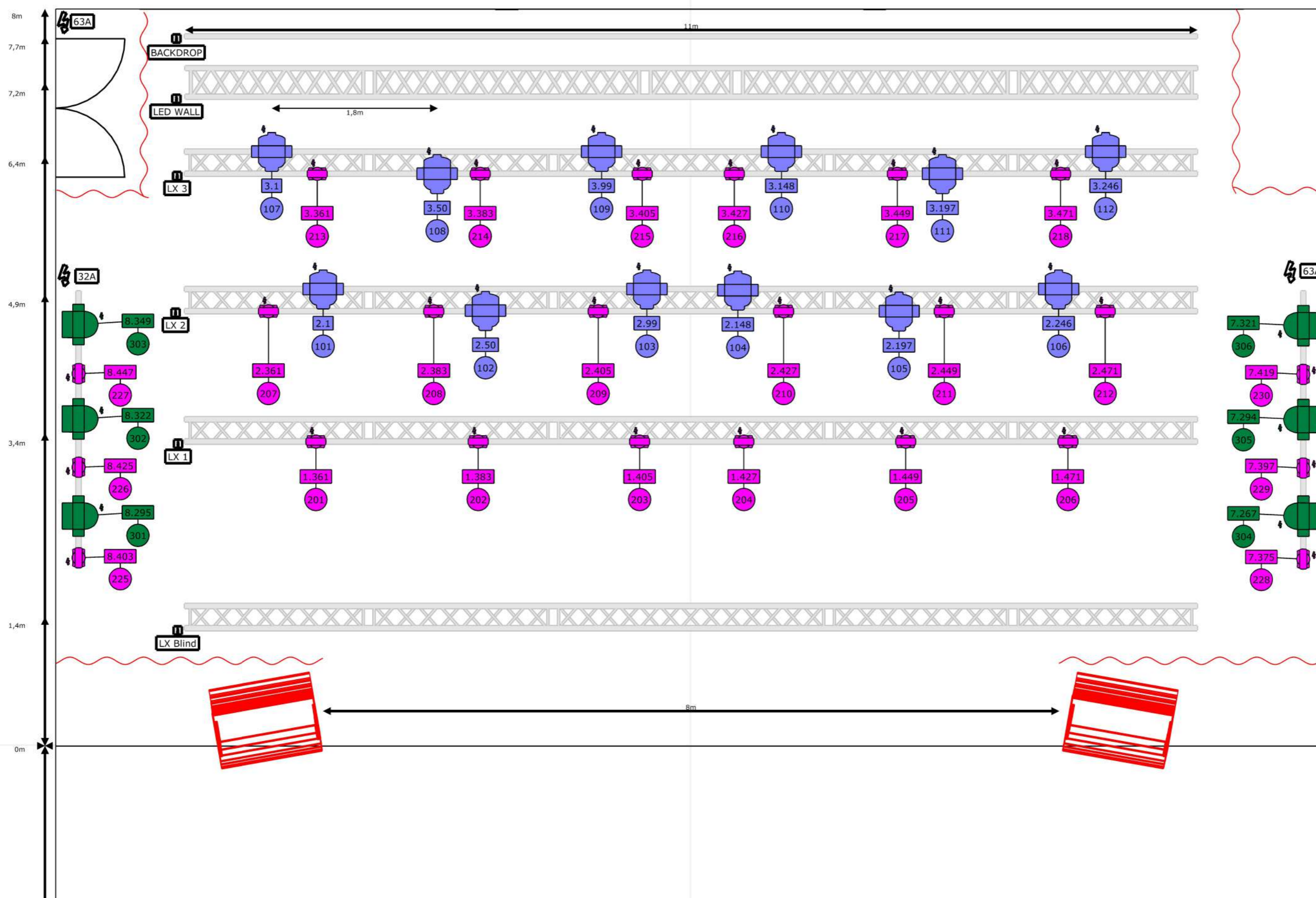


Bestandsnaam
MG3.3.1.c2p

Documentnaam

Legende symbolen

	Showtec Stage Blinder 1 LED		Showtec Stage Blinder 4 LED
	Showtec Data Flash LED		



- Fixtures**
-  Robin LEDBeam 150
 -  Robin Esprite
 -  Robin Spikie