



General information

Load in

Load-in takes place at the rear of the venue, entrance via Fransensingel 65, 6211 AB Maastricht (NL). Parking space is limited, so please let us know in advance by which means of transport you will be arriving.

Payments

We don't do any cash payments. All payments will be done via bank transfers. NO payment will be made without receiving a copy of a passport from ALL artists.

Local crew

1x FOH engineer, 1x monitor engineer and 1x light engineer.

Backstage

Please notify us at least one week in advance if you have any dietary requirements (vegetarian, vegan, or fish only). The venue has 2 showers.

Barriers

The venue has no barriers.

Smoking

Please note that by the 1st of July 2008 it is no longer permitted to smoke in clubs/pubs/restaurants and venues in the Netherlands. The law includes stage, backstage and dressing rooms. We kindly ask for your cooperation. Please use our backstage smoking area for smoking.

Prohibited

Graffiti, use of (fake)blood, pyrotechnics, confetti, streamers, snow bubble blowers or similar products that may harm our light and/or sound system is prohibited. You will be charged €200 excl. VAT for cleaning and all damage caused by band- or crew members will be charged.

Sound limits

Max. 103 dB(A) LEQ-15 measured at the FoH position.

Insurance

All damage caused by band- or crew members on property of the venue (such as microphones, mixing consoles, dressing rooms, monitors etc.) will be charged to the band/crew on the day of the performance.

Route

Backstage entrance /parking
Fransensingel 65
6211 AB Maastricht



WIFI:

Artists-MG

Xc!&4C4\$

or scan QR code



Audio

PA system

Adamson E12	16x
Adamson IS10P	4x
Adamson E119	10x

Amping & processing

Labgruppen D120L	6x
Labgruppen D200L	2x
Labgruppen D80L	1x

Lake LM 44	2x
------------	----

FoH console

Soundcraft Vi5000

Main PA input

Analogue or AES at FoH or stageright position

Distance stage to FoH

10m

Wedges

Adamson M212	12x
Adamson IS119 (sub)	2x

Please note we do not have any sidefills on our stage

Amping & processing

Labgruppen D120	5x
-----------------	----

Monitor console

Soundcraft Vi3000

Patchbay FoH to stageright

Optical fibre	2x
Cat6	8x
BNC	8x
XLR in or out	12x

The venue has a sound pressure limit of 103 dB(A) LEQ-15 measured the FoH position

We expect bands and their crews to respect this limit!

Mics

Shure Beta 52	2x
Shure Beta 91	2x
Shure SM57	10x
Shure Beta 58a	10x
Shure SM58	12x

AKG D112	2x
AKG C451b	2x
AKG C414	4x

Sennheiser E906	4x
Sennheiser E604	6x
Sennheiser MD421	4x

Neumann KM184	2x
EV Re20	1x

DI's:

Radial J48	11x
Radial J48 stereo	6x

Microphone stands:

K&M tall boom	24x
K&M short boom	16x

Lights

House Console

High End Fullboar 4

Power & DMX FoH

3x 230v

1x Cat 6

Lights stage

Robe 150 18x

Robe Esprite M1 12x

Showtec Dataflash 22x

Showtec Led stageblinder 1 23x

Showtec Led stage Blinder 4 6x

Lights stage side

Robe 150 6x

Robe Spikie 6x

Lights floor

Robe 150 6x

Robe Spikie 6x

Front

Infinity TF300 Fresnel 6x

Robe 150 6x

Front portal

Infinity TF300 Fresnel 3x

Hazer

Look unique 2.1 2x

CLF Turbine stagefans 2x

Dimmerpack

32a 6ch. 240v 16a 1x

Stage

Stage dimensions

Height: 1.40m

Width: 12m

Length: 8m

Backdrop

Length: 10m

Width: 10m

Max. weight: 440kg

Scene opening: 8m

Clearance: 11m

Additional power

Stage:

1x 63 amp CEE 3 phase + ground + neutral (stage left)

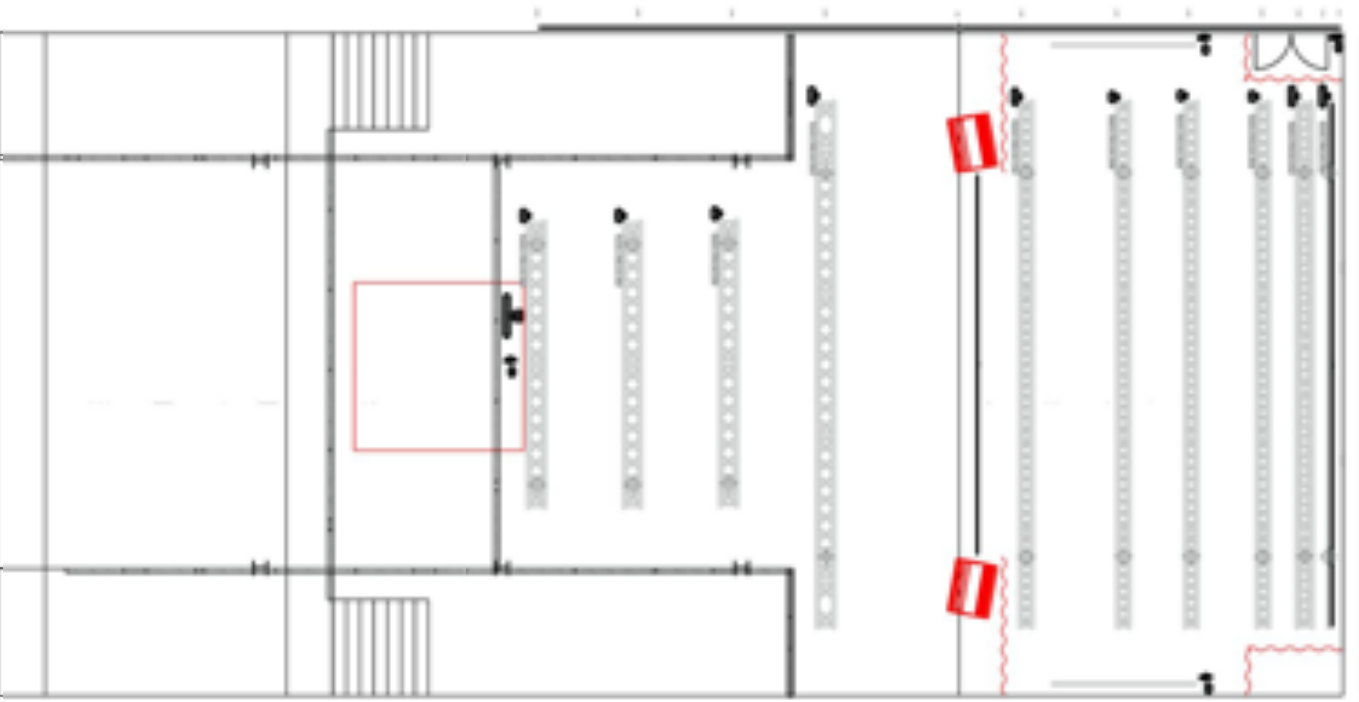
1x 63 amp CEE 3 phase + ground + neutral (stage right)

1x 32 amp CEE 3 phase + ground + neutral (stage right)

14 x 230v Shuko (backline power)

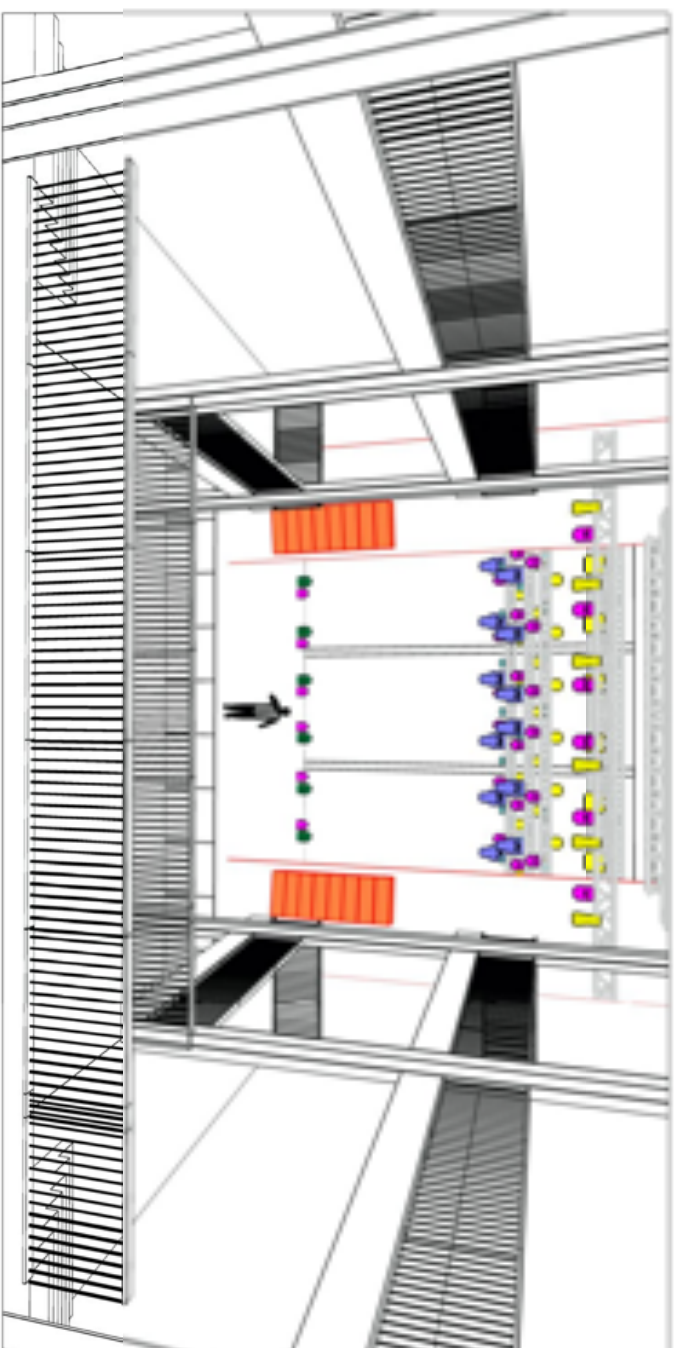
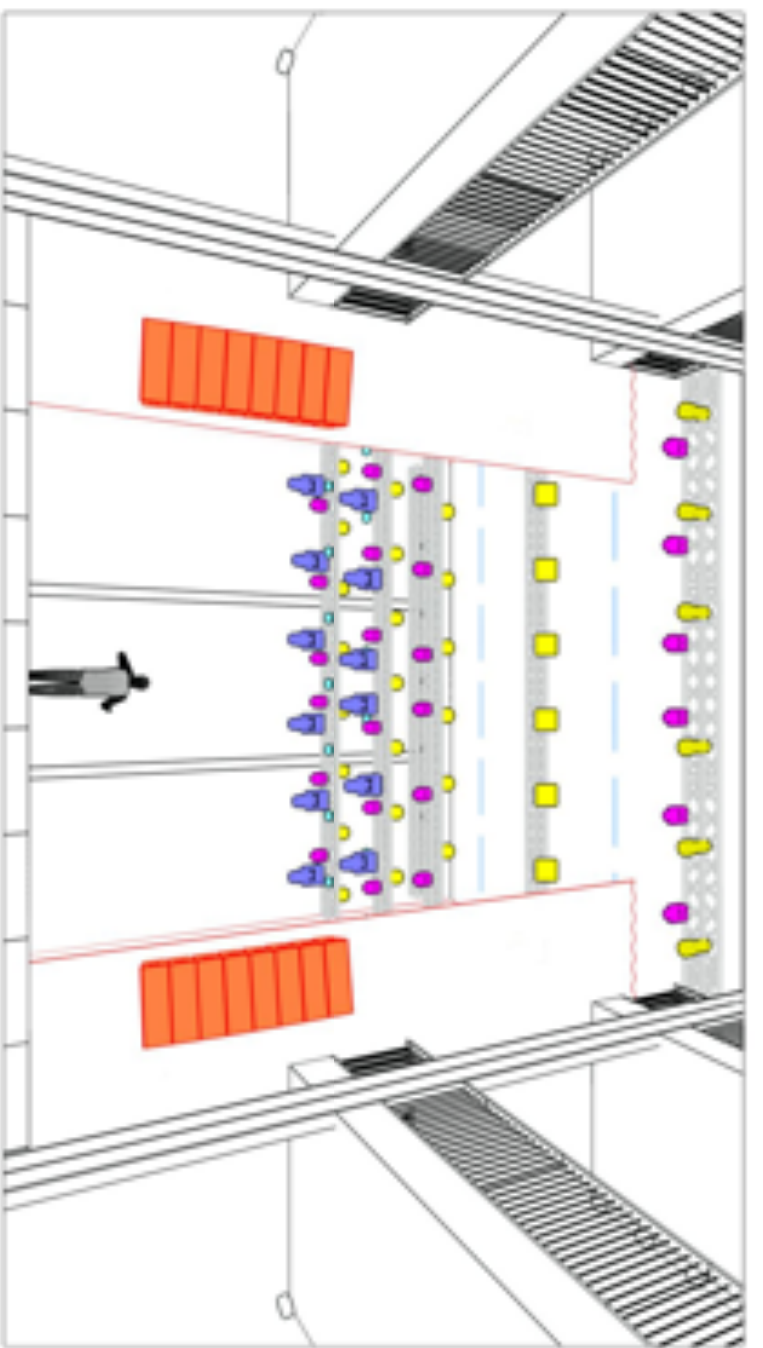
FoH:

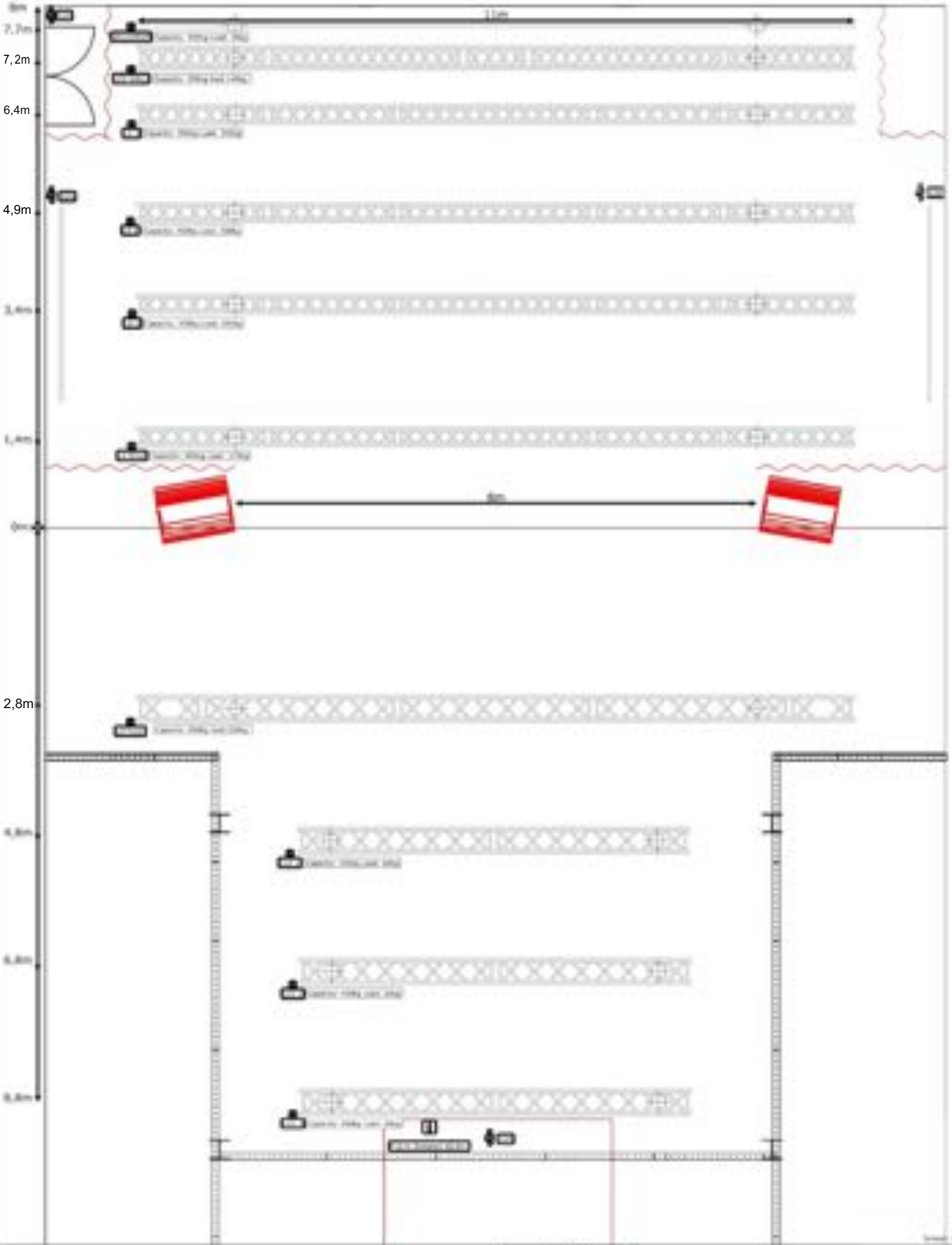
1x 32 amp CEE 3 phase + ground + neutral



Grote Club
 Muziekplezier! Maastricht 2020
 MG TECH
 Guy van Noorden

V3.3.1
 MG3.3.1.c2p









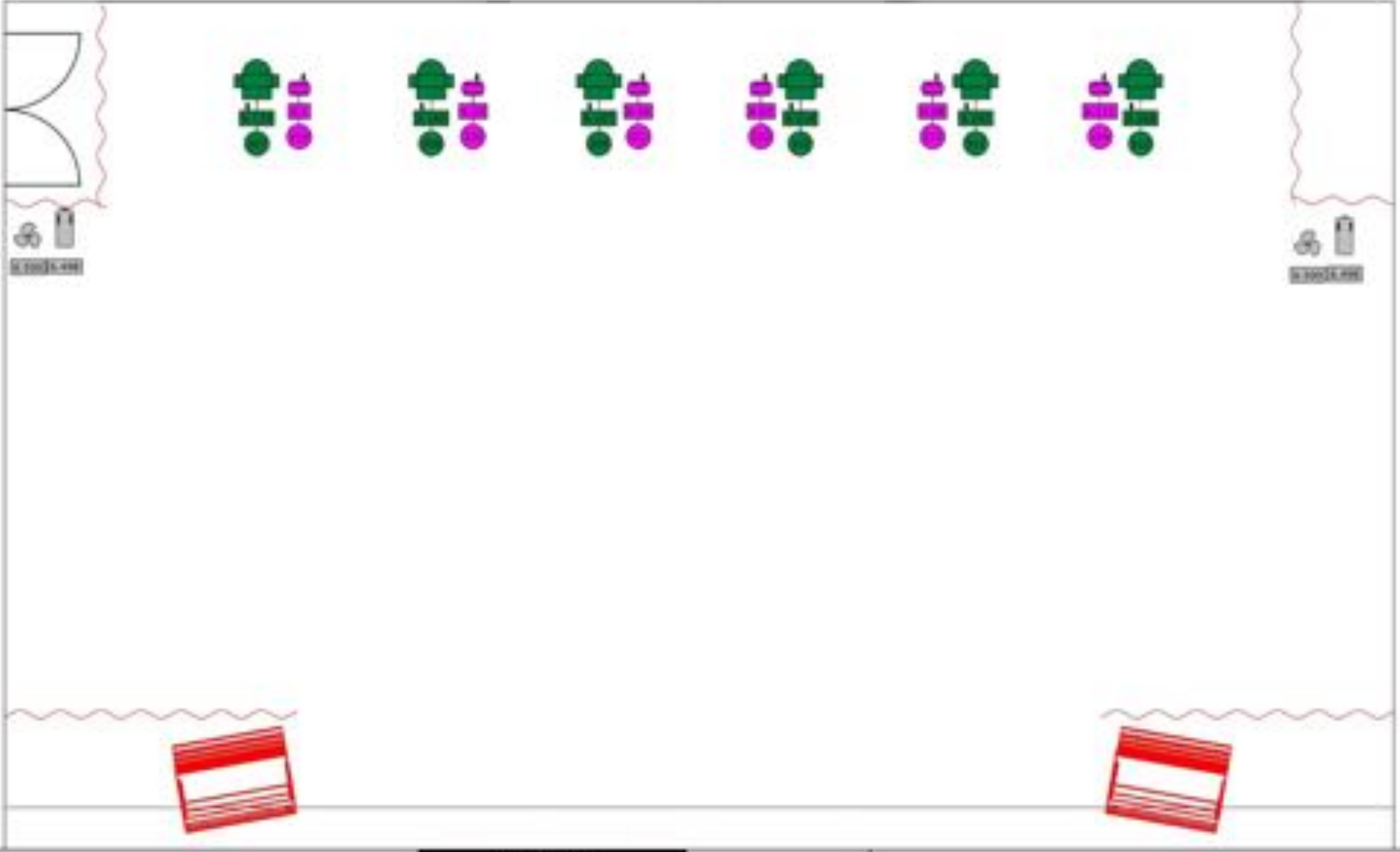
Project
Grote Club
 Muziekoeterij Maastricht 2020
 MG TECH
 Guy van Noorden

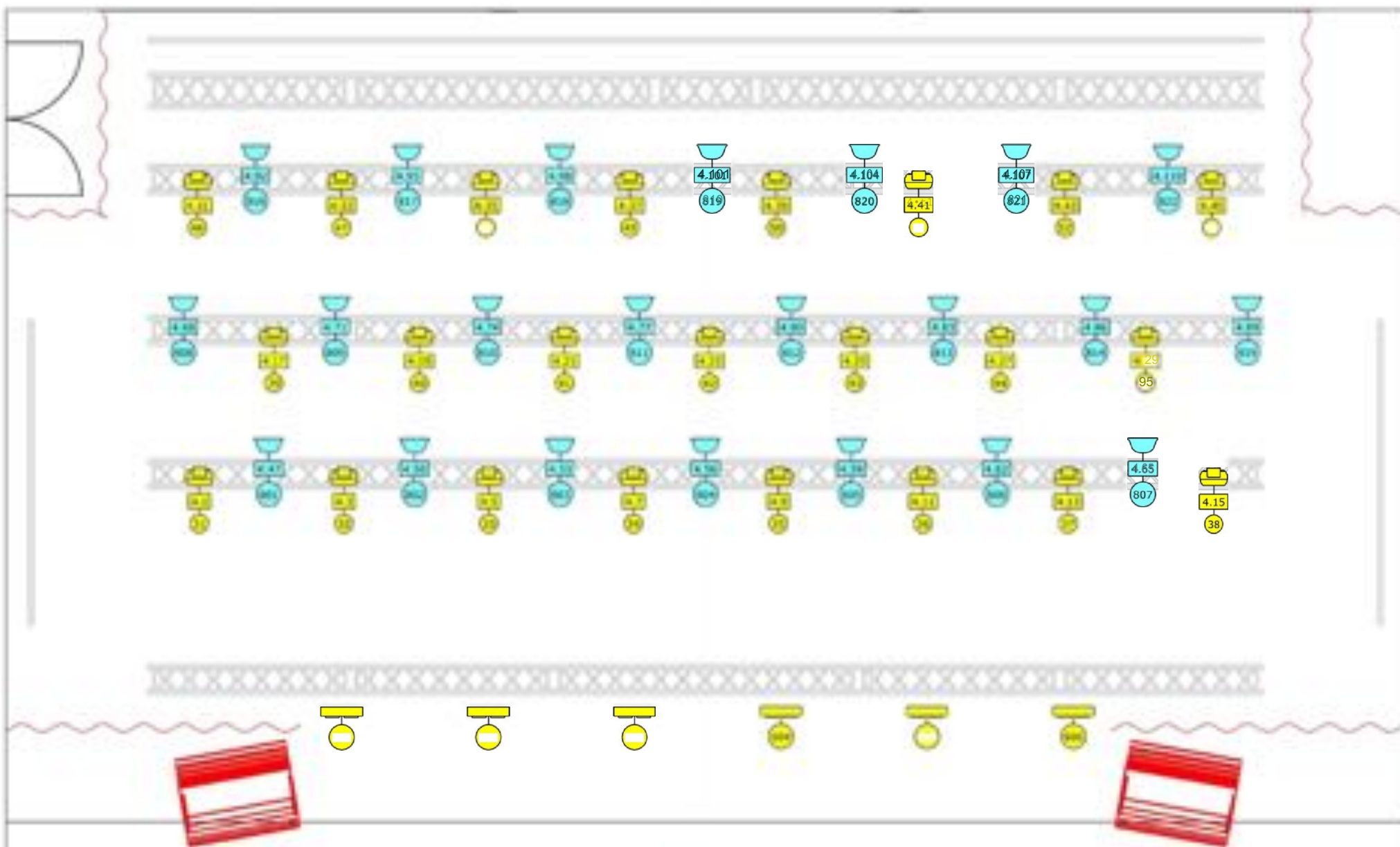


V3.3.1
 MG3.3.1.c2 p

Legende symbolen

-  Robio LEDBeam 1S0
-  TF-300 Fresnel (6)





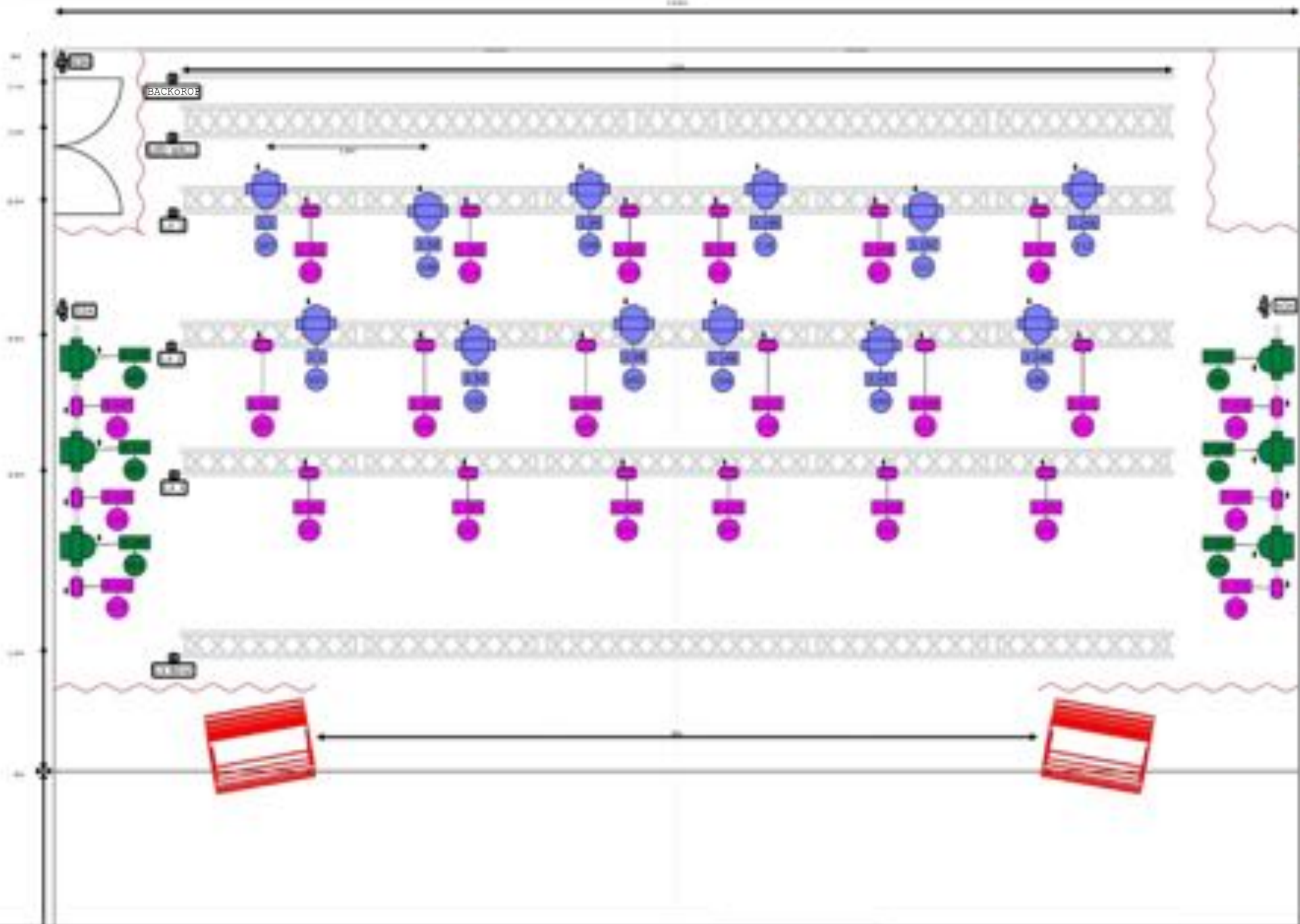
Grote Club
 Juziekolierij Plaastricht 2020
 3IG TECH
 Guy van Noorden V3.3.1



MG3.3.1.c2 p

Legende symbolen

	Show! 1 LED		Strobe 1000
	Strobe 1000		Strobe 1000



- Fixtures**
- Astron 2000Watt
 - RQ0n Esprto
 - Astron Spot



Robin Esprite m1			
	101	2: 1	LX2
	102	2: 50	LX2
	103	2: 99	LX2
	104	2: 148	LX2
	105	2: 197	LX2
	106	2: 246	LX2
	107	3: 1	LX3
	108	3: 50	LX3
	109	3: 99	LX3
	110	3: 148	LX3
	111	3: 197	LX3
	112	3: 246	LX3
Robin LedBeam 150 m1			
	10	5: 209	front LX hall
	11	5: 231	front LX hall
	12	5: 253	front LX hall
	13	5: 275	front LX hall
	14	5: 297	front LX hall
	15	5: 319	front LX hall
	201	1: 361	LX1
	202	1: 383	LX1
	203	1: 405	LX1
	204	1: 427	LX1
	205	1: 449	LX1
	206	1: 471	LX1
	207	2: 361	LX2
	208	2: 383	LX2
	209	2: 405	LX2
	210	2: 427	LX2
	211	2: 449	LX2
	212	2: 471	LX2
	213	3: 361	LX3
	214	3: 383	LX3
	215	3: 405	LX3
	216	3: 427	LX3
	217	3: 449	LX3
	218	3: 471	LX3
	301	6: 1	Floor
	302	6: 23	Floor
	303	6: 45	Floor
	304	6: 67	Floor
	305	6: 89	Floor
	306	6: 111	Floor
	801	8: 403	side left
	802	8: 425	side left
	803	8: 447	side left
	804	7: 375	side right
	805	7: 397	side right
	806	7: 419	side right
TF-300 Fresnel			
	1	5: 1	front
	2	5: 4	front
	3	5: 7	front
	4	5: 10	front
	5	5: 13	front
	6	5: 16	front
	7	5: 19	front (portal)
	8	5: 22	front (portal)
	9	5: 25	front (portal)
Desk Channel			
	2001	6: 498	fan
	2002	6: 499	smoke
	2003	6: 500	stage fan
Robin SPIKle m1 v1.2+			

	Num	Patch	Note
	310	6: 133	floor
	311	6: 160	floor
	312	6: 187	floor
	313	6: 214	floor
	314	6: 241	floor
	315	6: 268	floor
	810	8: 295	side left
	811	8: 322	side left
	812	8: 349	side left
	813	7: 267	side right
	814	7: 294	side right
	815	7: 321	side right

Stage Blinder 4

	701	5: 28	LXBlind
	702	5: 33	LXBlind
	703	5: 38	LXBlind
	704	5: 43	LXBlind
	705	5: 48	LXBlind
	706	5: 53	LXBlind

Stage Blinder 1

	710	4: 1	LX1
	711	4: 3	LX1
	712	4: 5	LX1
	713	4: 7	LX1
	714	4: 9	LX1
	715	4: 11	LX1
	716	4: 13	LX1
	717	4: 15	LX1
	718	4: 17	LX2
	719	4: 19	LX2
	720	4: 21	LX2
	721	4: 23	LX2
	722		dummy
	723	4: 25	LX2
	724	4: 27	LX2
	725	4: 29	LX2
	726	4: 31	LX3
	727	4: 33	LX3
	728	4: 35	LX3
	729	4: 37	LX3
	730	4: 39	LX3
	731	4: 41	LX3
	732	4: 43	LX3
	733	4: 45	LX3

Data Flash 3ch

	601	4: 47	strobe LX1
	602	4: 50	strobe LX1
	603	4: 53	strobe LX1
	604	4: 56	strobe LX1
	605		DUMMY
	606	4: 59	strobe LX1
	607	4: 62	strobe LX1
	608	4: 65	strobe LX1
	609	4: 68	strobe LX2
	610	4: 71	strobe LX2
	611	4: 74	strobe LX2
	612	4: 77	strobe LX2
	613	4: 80	strobe LX2
	614	4: 83	strobe LX2
	615	4: 86	strobe LX2
	616	4: 89	strobe LX2
	617	4: 92	strobe LX3
	618	4: 95	strobe LX3
	619	4: 98	strobe LX3
	620		DUMMY

	Num	Patch	Note
	621	4: 101	strobe LX3
	622	4: 104	strobe LX3
	623	4: 107	strobe LX3
	624	4: 110	strobe LX3

Power Spot 9 Q5 7ch

	1001	7: 1	HallUp
	1002	7: 8	HallUp
	1003	7: 15	HallUp
	1004	7: 22	HallUp
	1005	7: 29	HallUp
	1006	7: 36	HallUp
	1007	7: 43	HallUp
	1008	7: 50	HallUp
	1009	7: 57	HallUp
	1010	7: 64	HallUp
	1011	7: 71	HallUp
	1012	7: 78	HallUp
	1013	7: 85	HallUp
	1014	7: 92	HallUp
	1015	7: 99	HallUp
	1016	7: 106	HallUp
	1017	7: 113	HallUp
	1018	7: 120	HallUp
	1019	7: 127	HallUp
	1020	7: 134	HallUp
	1021	7: 141	HallUp
	1022	7: 148	HallUp
	1023	7: 155	HallUp
	1024	7: 162	HallUp
	1025	7: 169	HallUp
	1026	7: 176	HallUp
	1027	7: 183	HallUp
	1028	7: 190	HallUp
	1029	7: 197	HallUp
	1030	7: 204	HallUp
	1031	7: 211	HallUp
	1032	7: 218	HallUp
	1033	7: 225	HallUp
	1034	7: 232	HallUp
	1035	7: 239	HallUp
	1036	7: 246	HallUp
	1101	8: 1	HallDown
	1102	8: 8	HallDown
	1103	8: 15	HallDown
	1104	8: 22	HallDown
	1105	8: 29	HallDown
	1106	8: 36	HallDown
	1107	8: 43	HallDown
	1108	8: 50	HallDown
	1109	8: 57	HallDown
	1110	8: 64	HallDown
	1111	8: 71	HallDown
	1112	8: 78	HallDown
	1113	8: 85	HallDown
	1114	8: 92	HallDown
	1115	8: 99	HallDown
	1116	8: 106	HallDown
	1117	8: 113	HallDown
	1118	8: 120	HallDown
	1119	8: 127	HallDown
	1120	8: 134	HallDown
	1121	8: 141	HallDown
	1122	8: 148	HallDown
	1123	8: 155	HallDown
	1124	8: 162	HallDown

	Num	Patch	Note
	1125	8: 169	HallDown
	1126	8: 176	HallDown
	1127	8: 183	HallDown
	1128	8: 190	HallDown
	1129	8: 197	HallDown
	1130	8: 204	HallDown
	1131	8: 211	HallDown
	1132	8: 218	HallDown
	1133	8: 225	HallDown
	1134	8: 232	HallDown
	1135	8: 239	HallDown
	1136	8: 246	HallDown